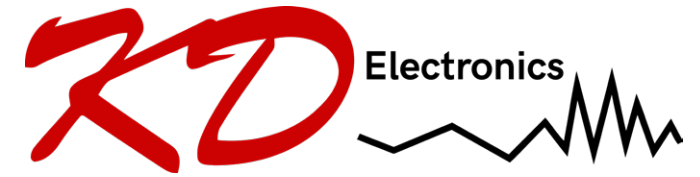


TMAC



HOW TO CREATE A SAFER ENVIRONMENT?

TEMPERATURE MONITORING
ACCESS CONTROL

ONE BY ONE SOLUTION

TMAC is a **one by one solution** suitable for relatively **small places** or places that don't have high requirements for passage efficiency, such as small offices, schools, post offices, small retails, etc. The controller will authenticate each person one by one to allow the access or not.

TMAC is a combination between 2 different technology

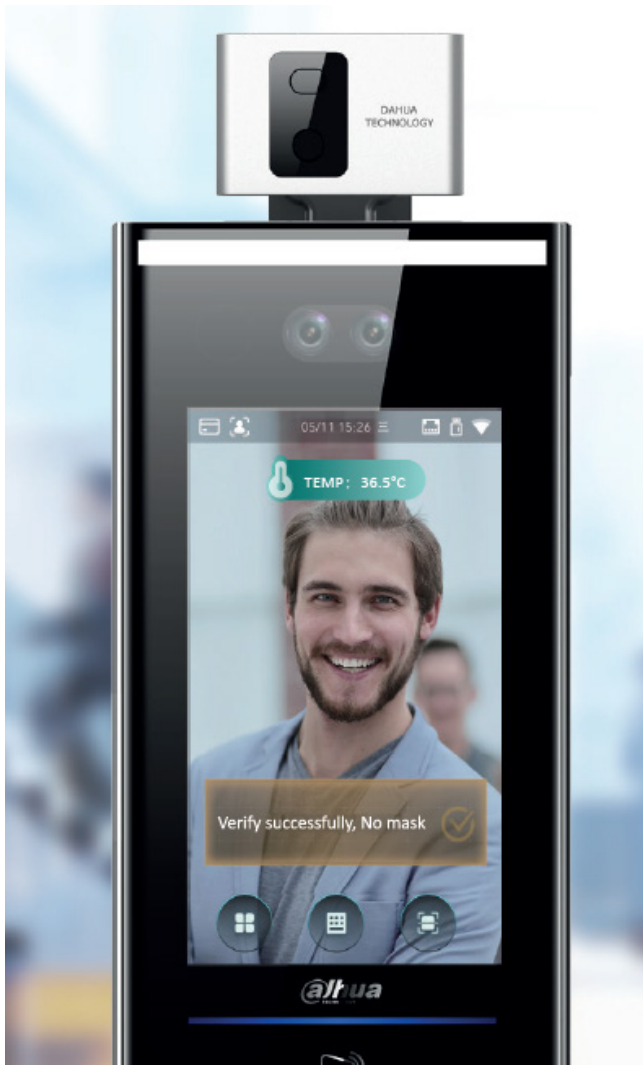
- Temperature monitoring
- access control

VALUES

- AI (Anti fake identification)
- Contactless
- Mask detection
- Face recognition
- Temperature monitoring
- Protect people's privacy



MULTI LAYER AUTHENTICATION



Identification valid



Is this person allowed to enter ?
Face recognition

Mask compliance



Is the person wearing a mask ?
Mask detection

Temperature check



Is the person's temperature ok ?
Temperature measurement

If the 3 conditions are met, the access is **granted**.
It is also possible to configure the system to use **just one condition** like the temperature checking (Normal temperature = access granted)

PRODUCTS



Temperature Monitoring Access Control Terminal

DHI-ASI7213X-T1

- 7 inch touch screen
- Ambient temperature range 16 C ~ 32 C
- Temperature accuracy: 0.3deg
- Temperature monitoring distance 0.3m ~ 0.8m
- Sound prompt: Temperature abnormal alarm
- Unlock Mode: Face/Card/Password

Item code: 13176



Thermal Temperature Station Floor Stand

ASF172X-T1

- One-piece Design for Quick Deployment and Portability
 - Galvanized Steel Construction
 - Compatible with the DHI-ASI7213X-T1 (13176)
- Thermal Temperature Station

Item code: 13177



The TMAC terminal is an indoor device which can be **wall mounted** or can be used with a **floor stand**. A **tablet** can be integrated through wifi to give notifications to reception area. The TMAC terminal can be used by its own, without the accessories.

Android 10-inch digital indoor monitor

DHI-VTH5341G-W

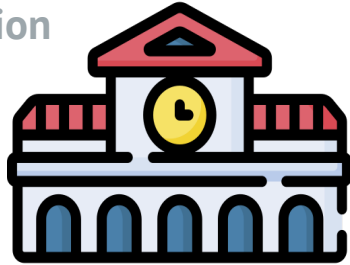
- Android 8.1
- More User-Friendly UI
- Ethernet and Wi-Fi
- 10" TFT Capacitive touch Screen, 1024×600
- Micro-SD Card optional, max 256GB

Item code: 13178

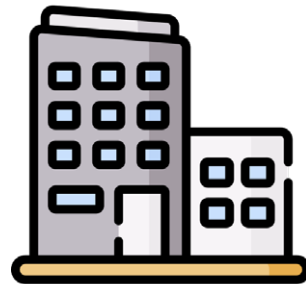
SCENARIOS



Education



Small office



Small shop



THE SOLUTION CAN ALSO
BE COMBINED WITH FLOW
CONTROL MANAGEMENT

