



TiOC HOW TO GUIDE

How to set up Smart Motion Detection

For an NVR-system

The following guide enables you to set up the Smart Motion Detection function on **Wiz Sense** (Series 3) and **Wiz Mind** (Series 5 & 7) NVR-systems.



Series

NVR5000-1 Series

Example

NVR5216-16P-1

System Version: V4.000.10BE002.4

Build Date: 2020-09-10

NB: The firmware version is based on the latest version when this document was created and may slightly differ from future versions, however this will not affect any of the functionality.

TIOC HOW TO GUIDE | How to set up Smart Motion Detection

Step 1: Go to **AI** > "PARAMETERS" > "SMD". Choose the channel you want to run Smart Motion Detection on, choose the type "AI by Recorder", click **Enable** to activate the function and adjust other settings such as the effective target such as "Human" or/and "Motor Vehicle" and the sensitivity.

Click **Apply** in the bottom right corner to save all the changes.

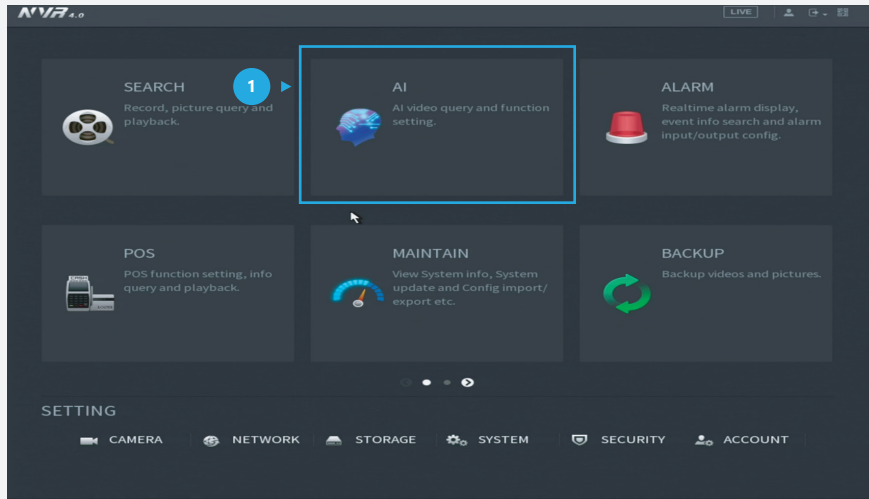


Figure 1: Start from the setup page of the NVR

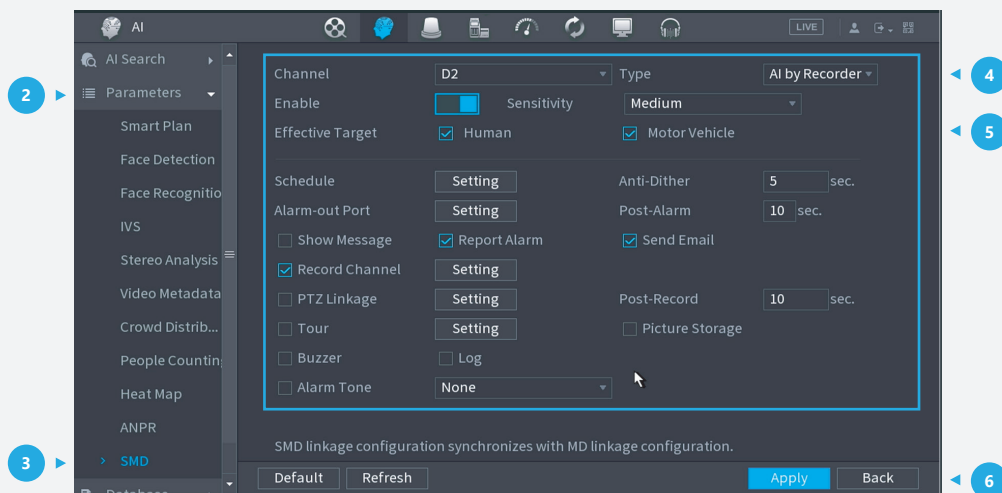


Figure 2: Enable and adjust the related settings

Step 2: Set to record

If you want to record motion detection, go to "Storage" > "Schedule", ensure the tab is **Record**, check the channel is the one you want to set, and *click* "Settings" ⚙️.

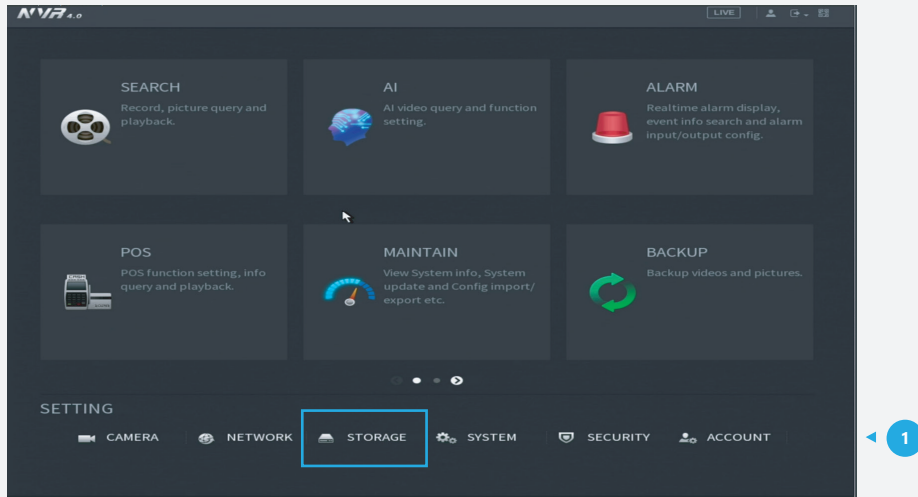


Figure 3: Start from the setup page of the NVR

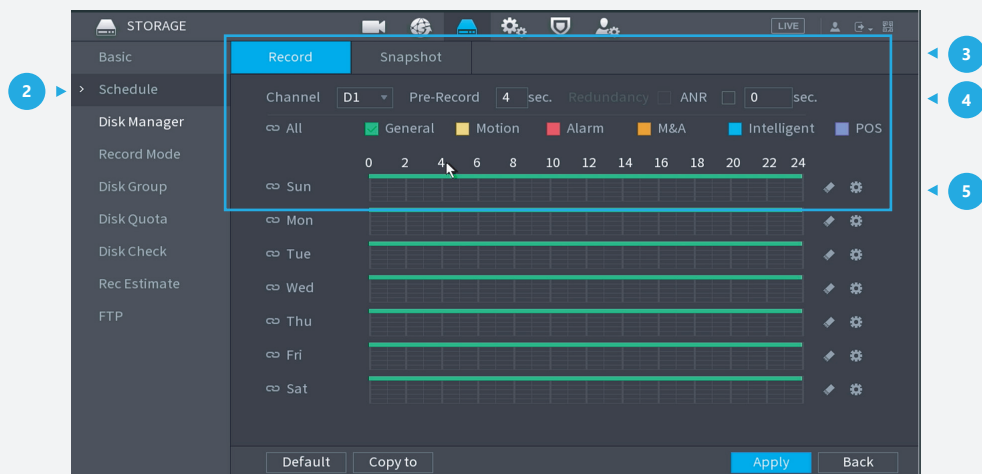


Figure 4: Set the motion detection record time

Step 3: On this page you can choose what kind of records can be stored, we've chosen "General" and "Motion Detection" as an example. Choose the day you want to record the event for motion detection before *clicking* **OK** to save your settings.

Note: If you need the time period to go beyond 00:00/midnight, you need to split this time period into two, one before midnight and the other after midnight. For example, the period 17:00 to 05:00 needs to be set separately as 17:00 to 24:00 and 00:00 to 05:00.

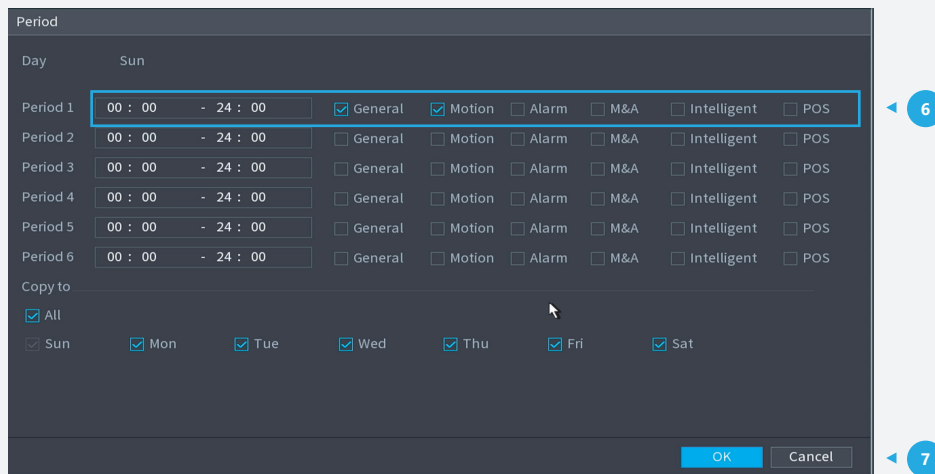


Figure 5: Set the motion detection recording time

Step 4: Check the records

After the recording time has been set for motion detection, go to **ALARM** > "Alarm Info", then you can check the SMD records (Smart Motion Detection) by checking records from "All" or selecting the type of "Motion Detection" in a specific period of time. *Click* each record and here you will find the Smart Motion Detection target and other detailed information.

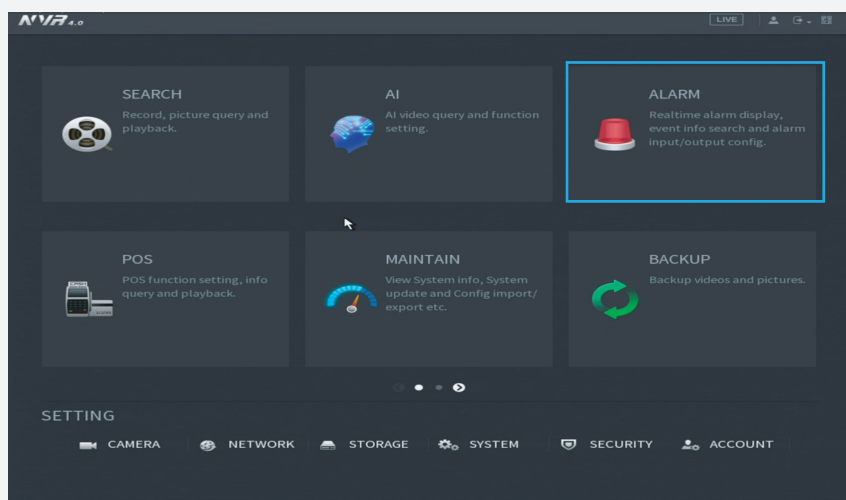


Figure 6: Start from the setup page of the NVR

TIOC HOW TO GUIDE | How to set up Smart Motion Detection

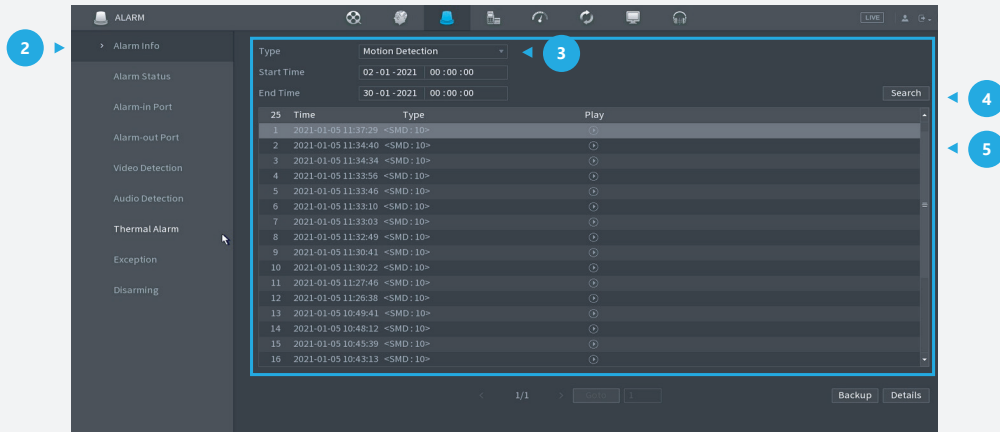


Figure 7: Check alarms for Smart Motion Detection

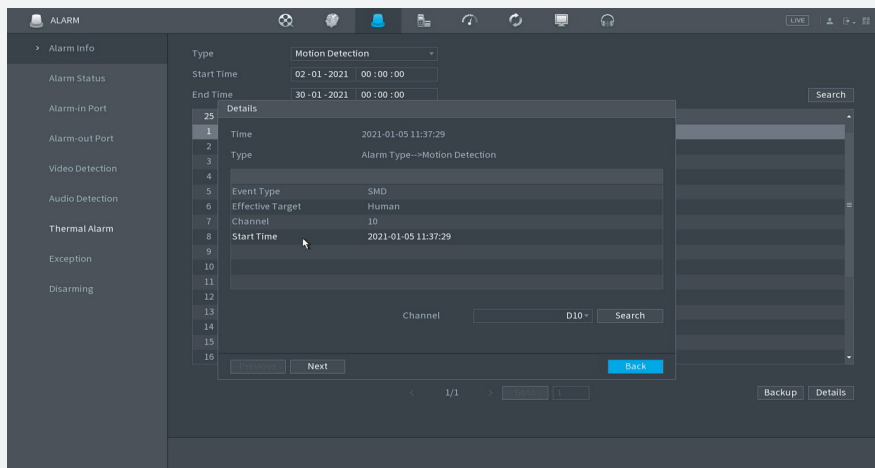


Figure 8: Details of the Smart Motion Detection recordings

*Design and specifications are subject to change without notice.

DAHUA UK & IRELAND

Quantum, 60 Norden Road, Maidenhead, Berkshire SL6 4AY
Tel: +44 (0) 1628 613 500
sales.UK@dahuatech.com
support.UK@dahuatech.com

If you still encounter problems
operating your Dahua device,
please call **+44 (0)1628 613 500**