



TiOC HOW TO GUIDE

How to set up the IVS rules, such as tripwire, intrusion, abandoned/missing objects

For an NVR-system

The following guide enables you to set up the IVS rules on **Wiz Sense** (Series 3) and **Wiz Mind** (Series 5 & 7) NVR-systems.



Series

NVR5000-1 Series

Example



NVR5216-16P-1

System Version: V4.000.10BE002.4

Build Date: 2020-09-10

NB: The firmware version is based on the latest version when this document was created and may slightly differ from future versions, however this will not affect any of the functionality.

TIOC HOW TO GUIDE | How to set up IVS rules

Step 1: Go to  AI > "PARAMETERS" > "IVS", choose the you want to set up to receive email alerts , keep Enabled and *click*  Trigger icon.

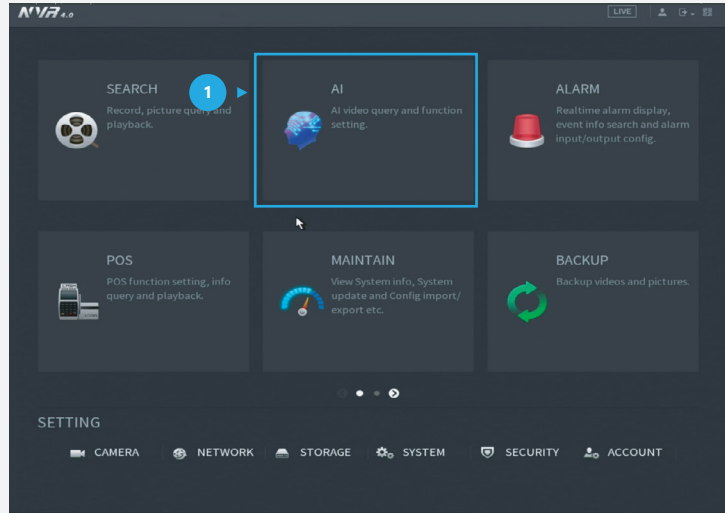




Figure 1: Start from the setup page of the NVR

Step 2: For Tripwire

Go to  AI > "PARAMETERS" > "IVS", *check* so at least one "Tripwire" rule is enabled and *click*  Draw.

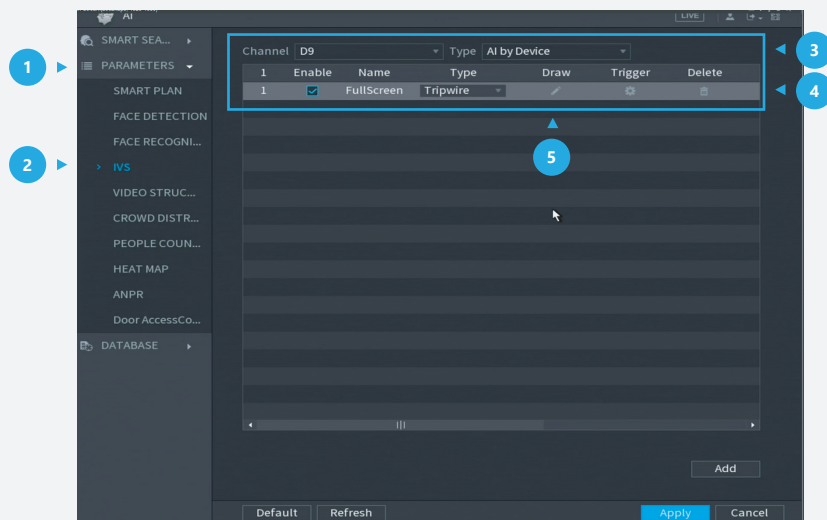


Figure 2: Draw a new Tripwire rule for IVS

Step 3: Draw the target line for detection using a mouse. Then, *click* **OK** after you have finished.

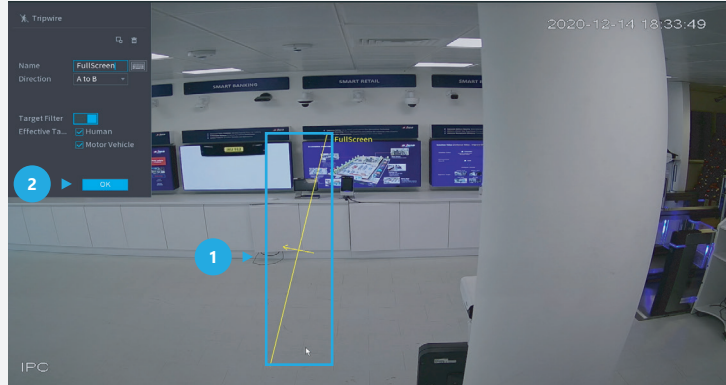



Figure 3: Draw the detection area

Step 2: For Tripwire

Go to  AI > "PARAMETERS" > "IVS", check at least one "Intrusion" rule is enabled and *click*  Draw.

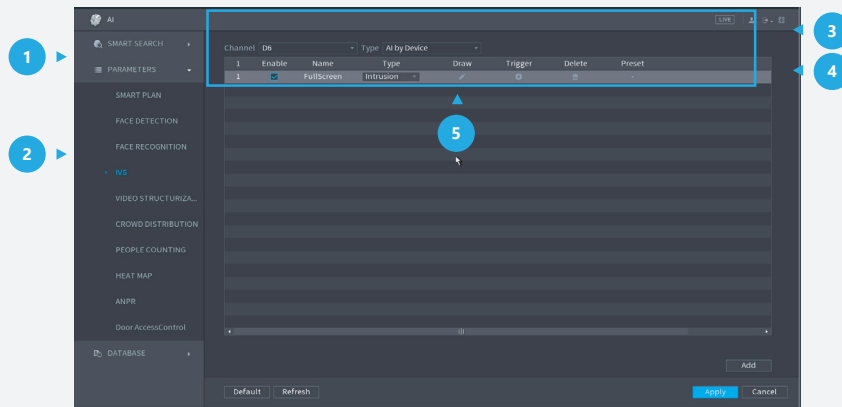


Figure 4: Add a new Intrusion rule for IVS

Step 3: Draw the target line for detection using a mouse. Then, click **OK** after you have finished.



Figure 5: Draw the detection area

Step 4: Click **Trigger** to decide the detailed settings of the rule. Then, click **Apply** within the trigger screen to save the trigger and click **Apply** at the bottom right of the screen to save the IVS function.

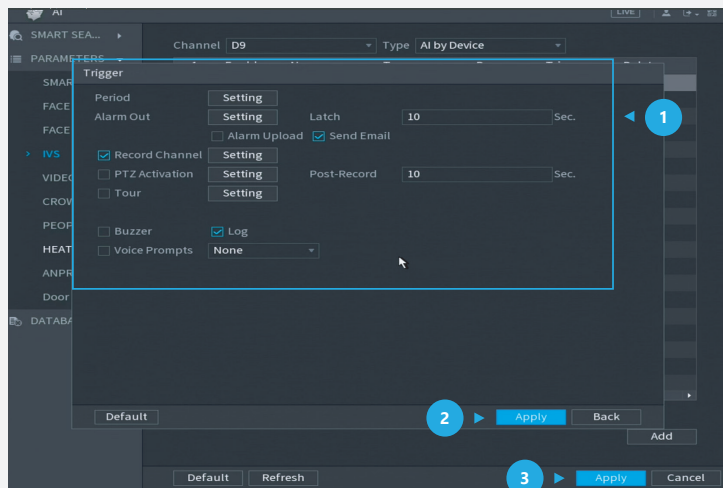


Figure 6: Trigger settings

*Design and specifications are subject to change without notice.

DAHUA UK & IRELAND

Quantum, 60 Norden Road, Maidenhead, Berkshire SL6 4AY
Tel: +44 (0) 1628 613 500
sales.UK@dahuatech.com
support.UK@dahuatech.com

If you still encounter problems
operating your Dahua device,
please call **+44 (0)1628 613 500**