

1200Mbps Dual Band Wall Mount Wireless AP

Model: G-INW-LITE-48



Description:

This is an 11ac dual band wall mount style wireless access point upgrade to the latest wireless-AC technology, fast data rate (900Mbps in 5G and 300Mbps in 2.4GHz) and dual band allowing content to download faster, large video or music files to sync more quickly and stream seamlessly. Embed PoE, work in hotel, school, hospital mainly for a stable wireless networking. Then work with Yunlink's Access Controller System and cloud management system, easy in central configuration, meet with different advertisement and multiple authentication requirement, professional and cost effectively in large area Wi-Fi solution

Wireless AC Technology, more users

This AC dual band wall mount Wireless Access Point with Gigabit WAN port, offers AC technology 1200Mbps data rate for seamless/smooth video and music streaming. More users including computers, Internet-ready TVs, game consoles, and other Wi-Fi devices can access into this wireless networking

Support 802.11kvr Seamless Roaming

It supports 802.11kvr seamless roaming, user will enjoy the freely networking without any suspend even the wireless signal switch from this AP to another AP.

Dual Band, 5G Priority, Less Interference

Double your network bandwidth with Dual-Band AC(2.4G and 5G) and 5G priority, designed to help avoid interference and maximize throughput. You can browse web pages, handle mails and chat over 2.4G while enjoying large-free HD multimedia and online gaming over 5G without worrying about interference.

Build in Wi-Fi Channel Analysis Tool for best channel

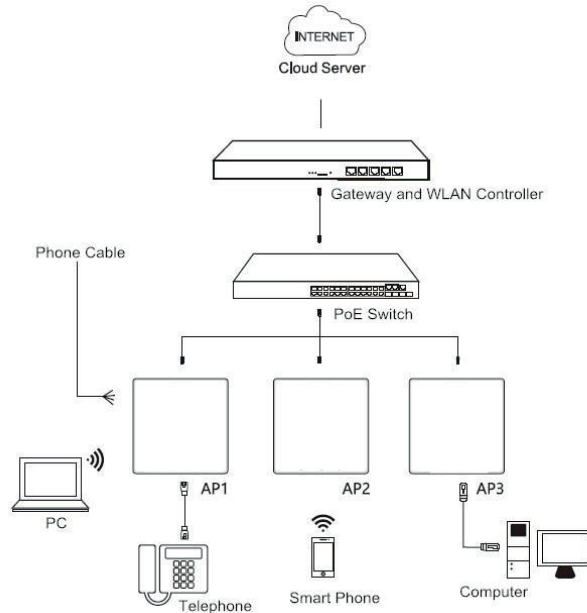
Build in Smart Channel Analysis Tool, help to select the less Wi-Fi Interference channels, ensure the stability wireless signal.

Power over Ethernet

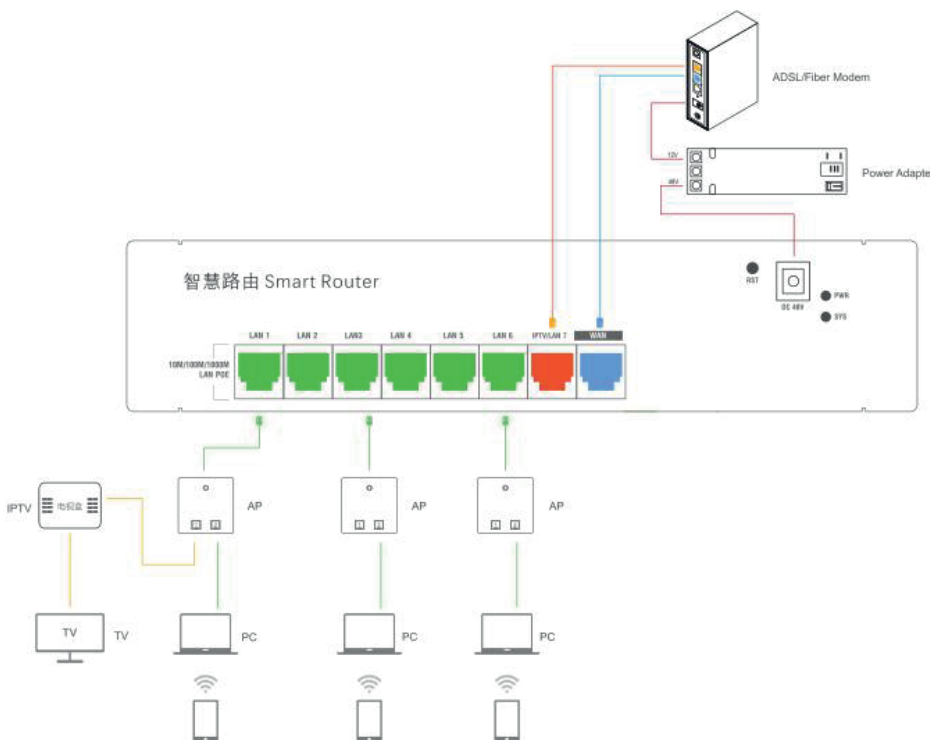
It has integrated IEEE 802.3af standard Power over Ethernet (PoE), for easy installation and lower cost. So it can be installed in areas where power outlets are not readily available, eliminating the mess of altering existing network infrastructure.

Multiple application scene and Central management

Work with soft or hardware AC controller and PoE switch, plug and play, then allow administrator to manage it in centrally and remotely, suit for hotel, school, hospital, provide stable wireless access, promote advertisement and collect user information for second time sales.



Work with multiple function smart router, plug and play, easy to provide high security dual band wireless access for end users and gigabit Ethernet for IPTV. Then all cable is embedded in the wall, safety, tidy and perfectly comply with home decoration.



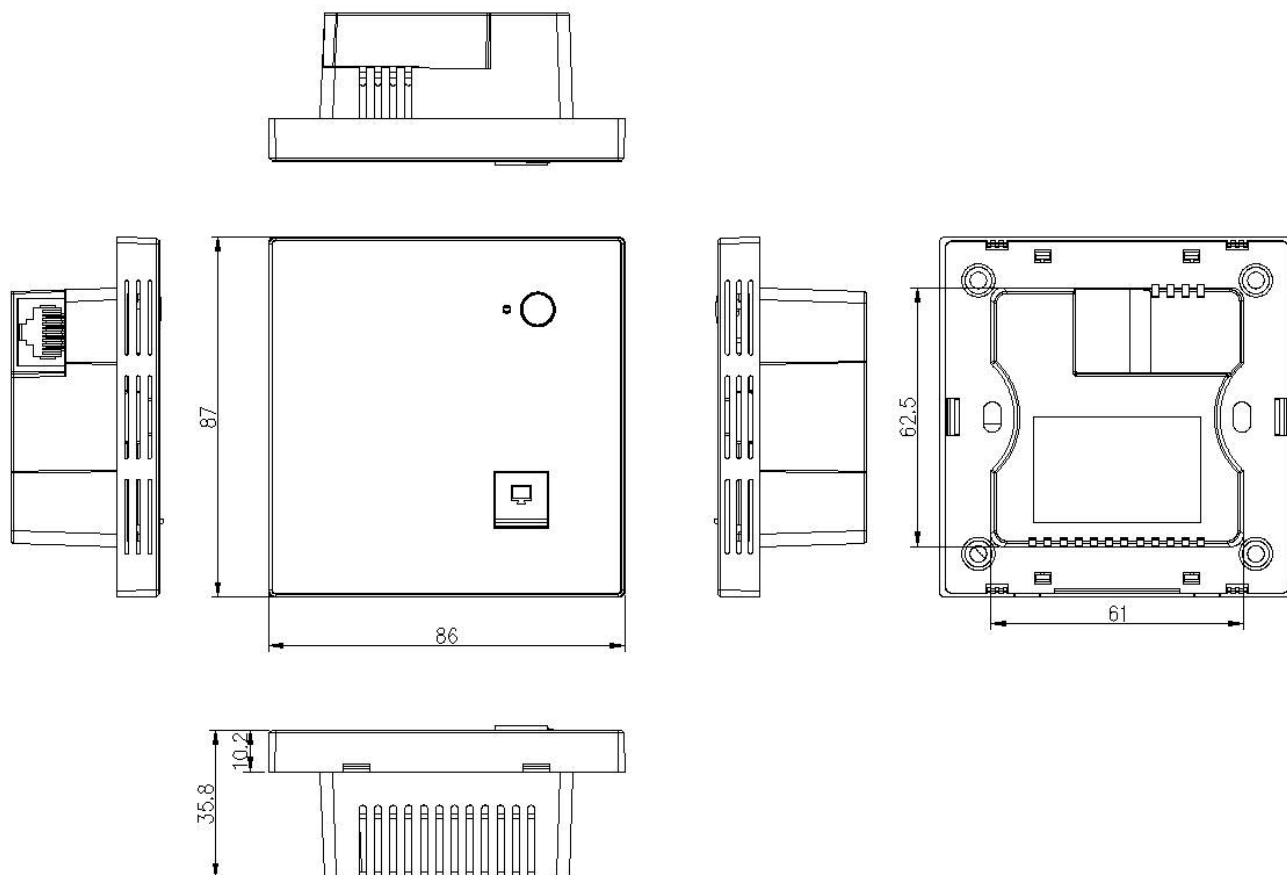
SPEC:

HARDWARE FEATURES	
Chipset	MT7628DAN+MT7613BEN
Flash	8M Flash
DDR	64M DDR
Interface	1*10/100 WAN port 1*10/100 LAN port 1* Reset / WiFi Switch On/Off button
Power Supply	48V PoE, IEEE 802.3af standard
Maxi power consumption	< 8W
Dimensions (W X D X H)	87*86*35.8mm
Antenna Type	On board WiFi antenna 2.4G: 2*2dBi omni antenna 5.8G: 2*2dBi omni antenna

WIRELESS FEATURES					
Wireless Standards	IEEE 802.11ac/n/a 5GHz; IEEE 802.11n/g/b 2.4GHz				
Frequency	5GHz : 5.150GHz~5.850GHz 2.4GHz: 2.4GHz - 2.484GHz				
Signal Rate	5GHz: Up to 900Mbps; 2.4GHz: Up to 300Mbps				
RF Power (2.4GHz)	802.11b	11M	17 ± 2dBm	1M	19 ± 2dBm
	802.11g	54M	16 ± 2dBm	6M	18 ± 2dBm
	802.11n HT20	MCS7	15 ± 2dBm	MCS0	17 ± 2dBm
	802.11n HT40	MCS7	14 ± 2dBm	MCS0	16 ± 2dBm
RF Power (5GHz)	802.11a	54M	16 ± 2dBm	6M	18 ± 2dBm
	802.11n HT20	MCS7	15 ± 2dBm	MCS0	17 ± 2dBm
	802.11n HT40	MCS7	14 ± 2dBm	MCS0	16 ± 2dBm
	802.11ac HT80	MCS9	13 ± 2dBm	MCS0	15 ± 2dBm
Receive Sensitivity (2.4GHz)	802.11b	11M	-83dBm	1M	-94dBm
	802.11g	54M	-72dBm	6M	-90dBm
	802.11n HT20	MCS7	-70dBm	MCS0	-88dBm
	802.11n HT40	MCS7	-68dBm	MCS0	-86dBm

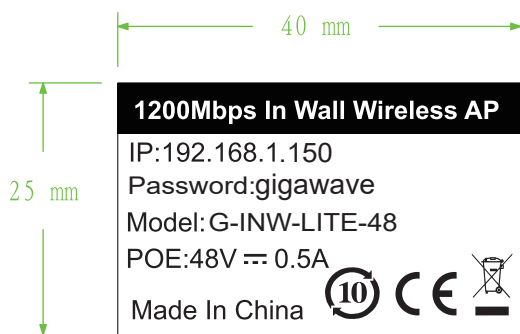
Receive Sensitivity (5GHz)	802.11a	54M	-72dBm	6M	-90dBm
	802.11n HT20	MCS7	-70dBm	MCS0	-88dBm
	802.11n HT40	MCS7	-68dBm	MCS0	-86dBm
	802.11ac HT80	MCS9	-58dBm	MCS0	-80dBm
Wireless	Auto-Channel selection				
	Distance Control (802.1x Ack timeout)				
	Multiple SSID (4 SSID for 2.4G, 4 SSID for 5.8G)				
	BSSID				
EVM	2.4G: 802.11b: ≤ -10 dB; 802.11g: ≤ -25 dB; 802.11n: ≤ -28 dB 5G: 802.11a: ≤ -25 dB; 802.11n: ≤ -28 dB; 802.11ac: ≤ -32 dB				
PPM	± 20 ppm				
Max Access Users	128				
Operation Mode	Wireless AP, Gateway, Wi-Fi Repeater				
Wireless Security	64/128-bit WPA / WPA2, WPA-PSK/ WPA2-PSK encryption and RADIUS 802.1x				
ESD - I	Contact Discharge: ± 6 KV, Air discharge: ± 8 KV				
ESD- II	Contact Discharge: ± 8 KV, Air discharge: ± 16 KV				
LED Status	WAN, LAN, SYS				
Management					
System Settings	Web-based configuration / Software AC controller and Hardware AC controller management				
Firmware Upgrade	Upgrade firmware via web browser or AC controller				
Administration	Admin Password can be configured				
System monitoring	Watch dog, Status in hand , useful statistic and Event log				
Logs	Supports local logs, logs host, logs file export				
Reset	Reset or factory defaults				
Backup	Restore settings & configuration of the device to local file, Scheduled reboot				
OTHERS					
Package Contents	1200Mbps Dual Band wireless access point Quick Installation Guide Setting Accessory				
System Requirements	Microsoft Windows 98SE, NT, 2000, XP, Vista™ or Windows 7, Windows 8, Windows 10, MAC OS, NetWare, UNIX or Linux				
Environment	Operating Temperature: -20~55 °C Extreme Temperature: -40~70 °C Storage Temperature: -40~70 °C Humidity: 5%~95% non-condensing				

Case Design:

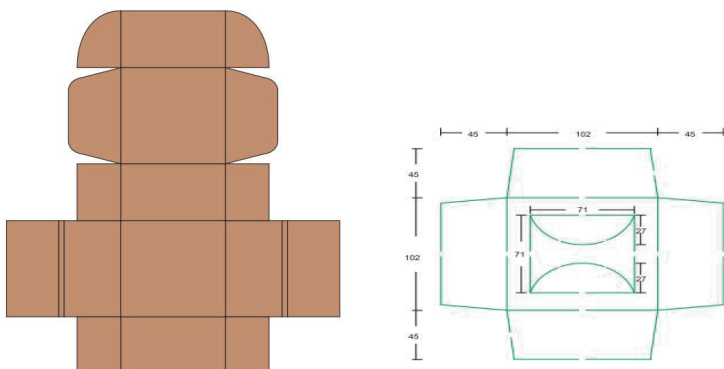


Packing:

1. Product Sticker:



2. Packing Box with Inner Card:

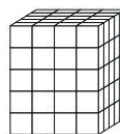
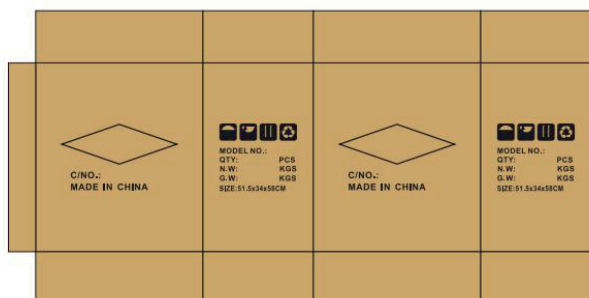


3. Carton box:

规格 : 515X340X580mm

材料 : 外箱 K=K 加强芯 面纸:180g ; 坑纸:120g ; 中格纸:70g ; 底纸:160g

中性入墙通用 100个一箱



彩盒放置示意图