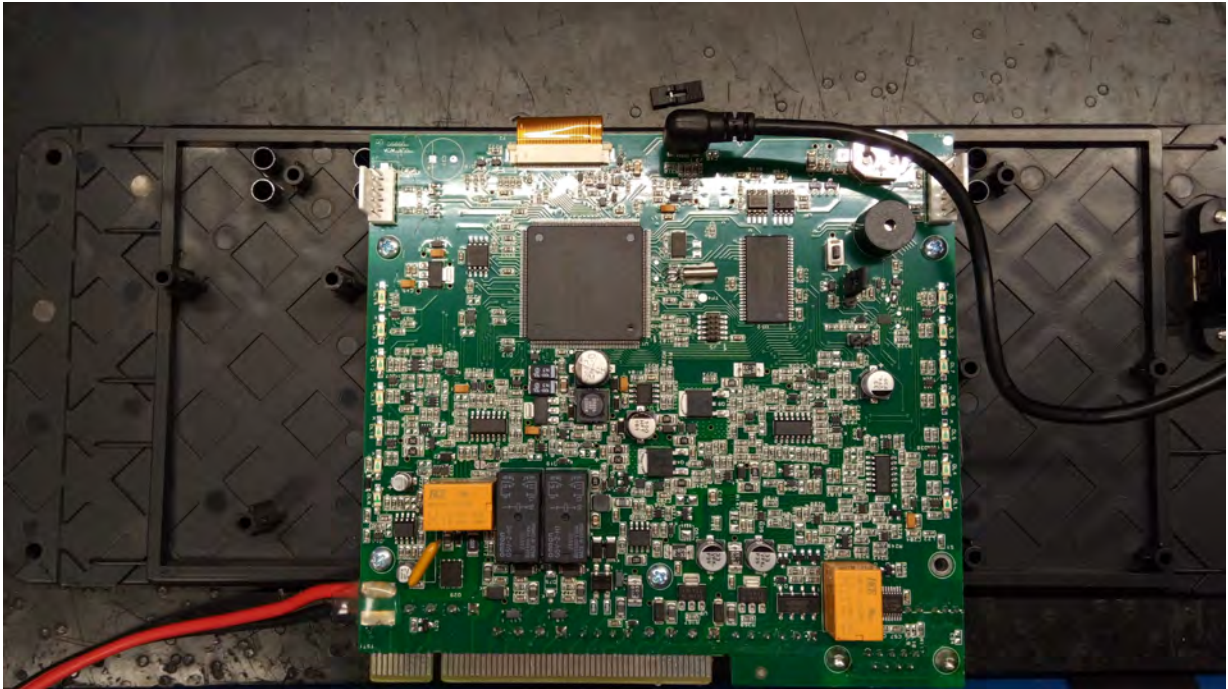
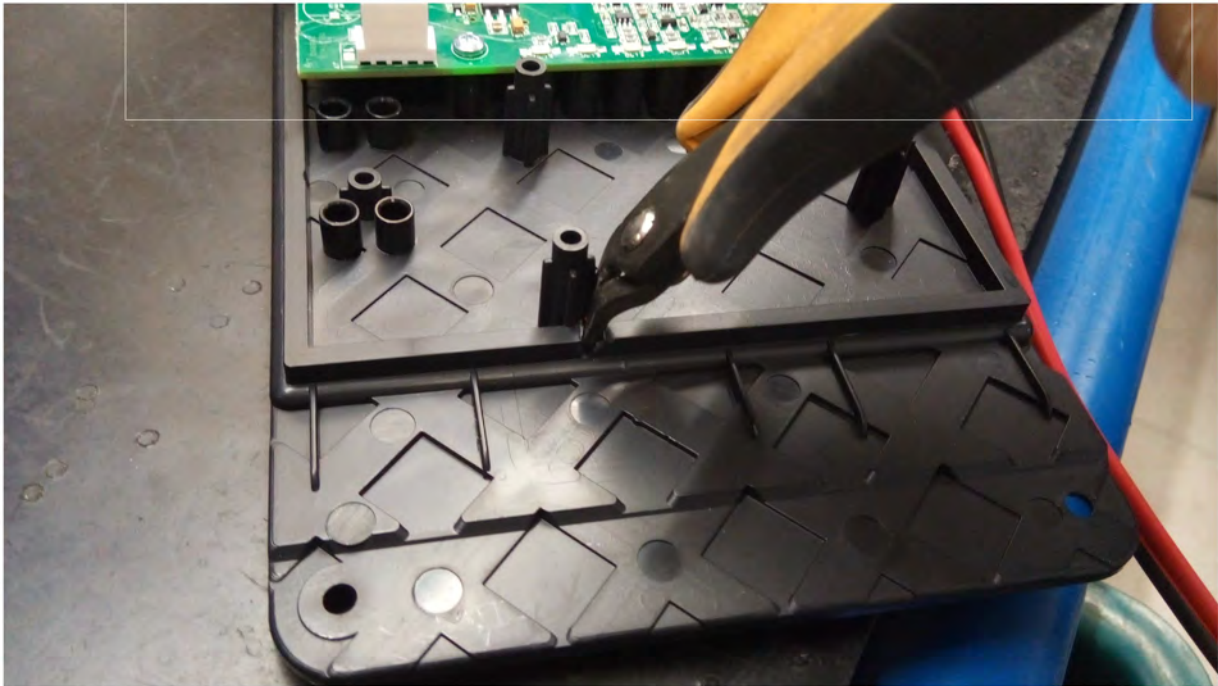


## Toccare Mini & Network Card Installation



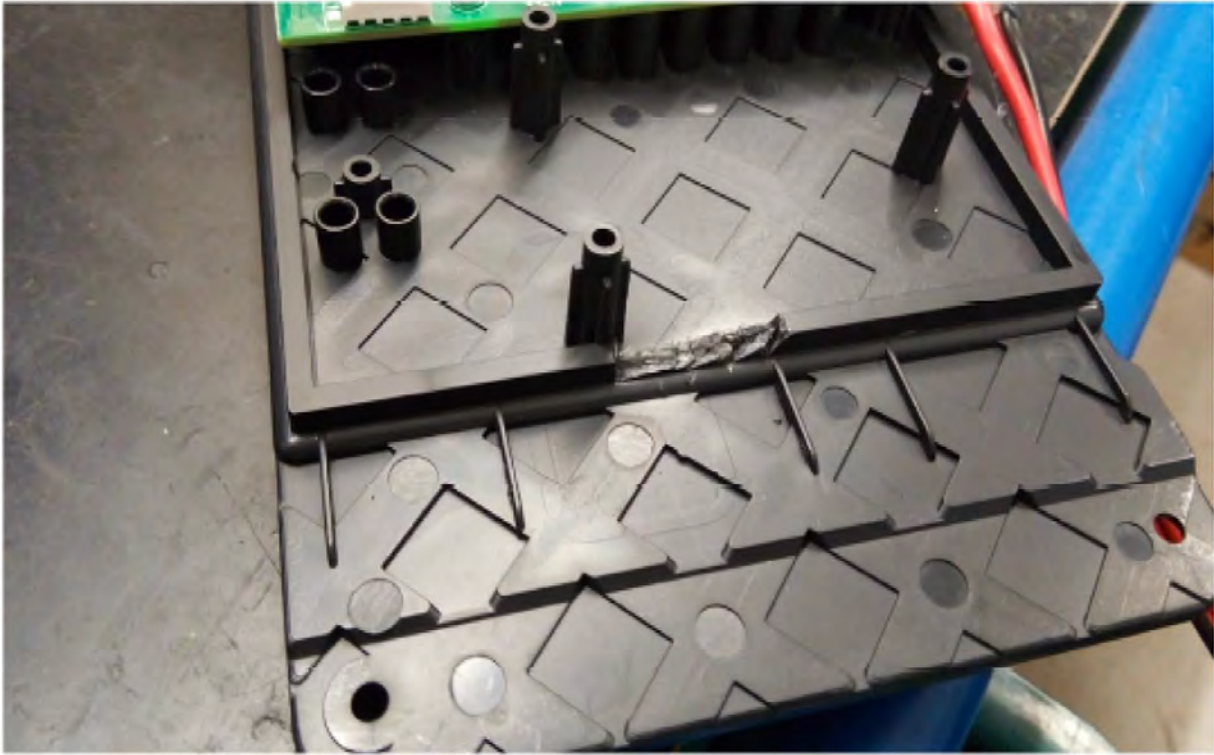
**Open the front panel of the Toccare Mini.  
Cut the plastic to make room for the cable used to  
connect the network card to the main board.**





**Practice a second cut as in the picture and then use a cutter to smooth the hole created.**







**tccare** by Eurotech

**TECHNICAL HELPLINE: +44 (0)203 141 0982**  
**[technical@eurotechfire.com](mailto:technical@eurotechfire.com)**