



Mx^{*}Pro

The Leading Multiprotocol
Intelligent Fire Panel



thinking Diamonds



APPROVED

MxPro⁵

Advanced's legendary quality and performance standards are demonstrated by the many landmark and local approvals we hold around the globe.

Our MxPro 5 fire panels now hold the prestigious diamond mark from FM, further demonstrating our market-leading position.

Setting the Standard in Fire Systems
with Advanced Thinking

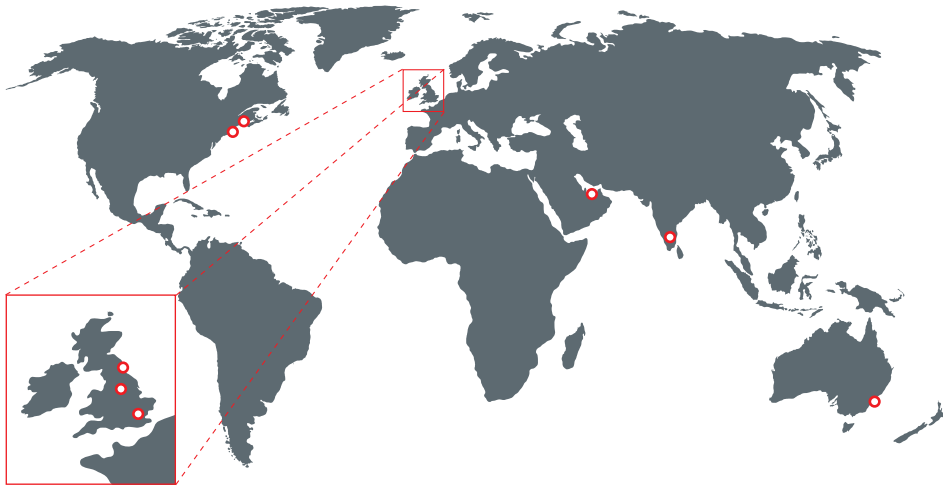


Contents

The Standard in Fire Systems	4
The Unbeatable Multiprotocol Solution from Advanced	6
MxPro 5	8
MxPro 4	10
MxPro Panel Comparison	12
Advanced Networking	14
Dynamix Tools	15
TouchControl	16
AlarmCalm	17
Advanced360	18
AdSpecials	19
Project Leadership	20
MxPro Parts List	21



The Standard in Fire Systems



Advanced is known all over the world for making the best quality, best performing fire systems.

We design 'easy' into all of our products. We make our software intuitive. We deliver fast, accessible support, training and service. Above all, we make it easy to rely on Advanced.

Fire Systems are in our DNA. Our people are among the most talented and experienced in the fire systems business. We train talented engineers and technicians every year. 25% of our business is dedicated to R&D. Our knowledge is unmatched, anywhere in the world and we're determined to keep it there.

Our systems are protecting people and property in over 60 countries worldwide, in many of the most prestigious and challenging locations. We realise our growth comes from the strongest customer relationships. We stay friendly, flexible and reactive to your requirements and our customer service is consistently rated excellent.

We manufacture all of our panels in the UK to demanding quality standards and hold global approvals. We enjoy full ISO 9001 compliance across manufacturing and design.



- Manufacturing and Quality
- Admin
- Customer Service and Support
- R&D



We are proud to be part of Halma plc, a FTSE 100 company dedicated to growing a safer, cleaner and healthier future for everyone, every day. Halma is an international market leader in specialist safety, health and environmental technologies.

www.halma.com



A Halma company

Welcome
to the
world of
Advanced

The Unbeatable Multiprotocol Solution from Advanced

1. Choose your panel.
2. Choose your detector.
3. Choose your Installer.

**Real freedom,
Advanced quality.**



The multiprotocol market is driven by freedom. Specifiers want to choose the best performing panel and match it with the most appropriate detector range.

End users want freedom from expensive maintenance contracts and installers want to work with easy to use systems, free of restrictive agreements.

MxPro is the market-leading solution and delivers performance, choice and real freedom.

MxPro includes two panel ranges, the advanced MxPro 5 and the benchmark MxPro 4. Both come in 1-8 loop formats and are compatible with Apollo, Argus, Hochiki and Nittan protocols. MxPro is simply the best multiprotocol solution available.

We do not lock customers into an installer network. We design our panels to be easy to install, configure and operate, from single panel installations to 200 panel networks. We offer our installers full, free training and the most comprehensive customer support available.

We were the first panel manufacturer to offer a three year guarantee as standard but your MxPro system will last a lifetime. It's a reliable, scalable solution that can grow as your specification changes and we offer lifetime support.



MxPro⁵



Our Most Advanced Panel

MxPro 5 is our highest performance, analogue addressable fire panel and is fully approved to EN54 Parts 2, 4 and 13.



MxPro 5 fire panels have been certified by FM Approvals, enabling them to carry the FM APPROVED diamond, one of the most prestigious certifications marks in the world.

MxPro is the result of decades of fire alarm and detection experience and research and development involving installers, specifiers, consultants and end users across the world.

MxPro 5 has been designed to offer industry leading power and performance. It packs more configuration, display, status and control options into its interface as standard than any other Advanced fire panel to date.

MxPro 5 utilises the latest technology making it significantly more powerful than the MxPro 4. Its processing power means it delivers more features than other panels, an advantage it will maintain for years to come.

Every MxPro 5 panel supports Advanced's unbeatable networking capabilities as well as our Dynamix Tools fire panel software making it both easy to use and configure, from the smallest to the largest of sites with the most complicated cause-and effects.



- Advanced diagnostics includes 'scope on board'

Features

- 1, 2, 4 or 8 loop formats
- Up to 254 devices per loop (protocol dependent)
- Up to 2,000 fire detection zones
- Over 200,000 devices per network
- True peer-to-peer networking
- Networkable up to 200 nodes
- Supports intelligent remote terminals, BMS interface, IP Gateway and I/O programmable I/O devices
- Built in oscilloscope, voltage and current meters
- Circuit monitoring from any panel or repeater
- On board or optional remote battery temperature sensor
- Direct USB and RS232 PC connections
- Advanced's simple select and click programming and configuration
- Autolearn and Loop Detection
- Quick start and protect - a working system after an Autolearn
- Peripheral expansion built in
- 20 built-in, fully programmable LEDs
- 4 programmable push buttons
- 5,000 event log entries
- Complete device history from each panel
- 200 programmable false alarm management areas per panel
- Programmable screen logo
- Timed enablement of isolated zones, input and output devices
- Advanced logic delivering huge configuration opportunities
- Backward compatible with MxPro 4 network
- Compatible with Apollo Discovery and XP95, Argus Vega, Hochiki ESP and Nittan Evolution protocols
- Approved to EN54 Parts 2, 4 and 13

Why do I need Part 13?

Part 13 compliance ensures that a fire system will continue to perform to its maximum capability during a fire situation. Increased current in alarm conditions combined with a high resistance connection

(e.g. an incorrectly tightened screw in a sounder base), could prevent the sounders and beacons from operating on what would have incorrectly appeared to have been an acceptable 'fault free' installation.

Advanced's MxPro 5 is one of the few EN54 Part 13 approved panels available. MxPro 5 continuously monitors all transmission lines for compliance, checking and reporting faults every minute of every day.

MxPro⁵

MxPro 5 - 1 Loop



- Single loop
- Small enclosure
- Maximum 7Ah internal batteries
- 20 programmable LEDs
- Optional programmable key switch
- Programmable Input
- Medium, Large and Deep enclosure options

MxPro 5 - 2 Loop



- One or two loops
- Medium enclosure
- Maximum 12Ah internal batteries
- Up to 50 additional programmable LEDs
- Up to 8 programmable key switches or 4 plus printer
- Plexi-glass door option
- Large and Deep enclosure options

MxPro 5 - 4 Loop



- One to four loops
- Large enclosure
- Maximum 17Ah internal batteries
- Up to 200 additional programmable LEDs
- Up to 8 programmable key switches or 4 plus printer
- Plexi-glass door option
- Deep and Extended enclosure options

MxPro 5 - 8 Loop



- Two to eight loops
- Extended enclosure
- Maximum 45Ah internal batteries
- Up to 200 additional programmable LEDs, 2 x switch cards or mimic
- Up to 8 programmable key switches or 4 plus printer
- Plexi-glass door and external battery box option

MxPro 5 - Integrated Peripheral Bus

- Integrated P-Bus as standard on all MxPro 5 panels
- Up to 32 expansion cards can be added to an MxPro 5 panel
- Peripheral expansion option cards include
 - 4 way relay card
 - 4 way sounder card
 - 10 way monitored input card
 - Conventional zone card (8 class B or 4 class A zones + 3 programmable relays)
 - 16 way push button/48 LED card
 - 16 way input/48 output (direct drive LED outputs)
 - Fire and Fault Routing/Protection Card
 - Redundant Controller

MxPro 5 - Remote Terminals

- Four types available including;
 - TouchControl touchscreen with active maps
 - Remote Display Terminal
 - Remote Control Terminal with additional Mute, Silence, Reset and Resound keys
 - Remote Control Terminal with additional LED status indication, four programmable push buttons, Mute, Silence, Reset, Resound, Lamp Test and Evacuate Keys.
- Optional level 2 access enable key switch. (Not TouchControl).
- Integrated standard or fault-tolerant network interface with screen termination point
- Programmable display for up to 2,000 zones along with sector based controls

MxPro 5 - Rack Mount

- Rack mountable control panels
- Additional 16U and 20U high IP55 enclosures
- Rack mount peripheral chassis plate, LED and switch card module options
- Dedicated Mimic door option



MxPro⁴

The Benchmark Fire Panel

The industry workhorse,
performing across the world,
in all kinds of applications.

MxPro 4 is approved to EN54
Parts 2 & 4



MxPro 4 is a world-proven multiprotocol fire panel range. Built on Advanced's well established Mx-4000 platform, it's a fire system installed in 100,000s of locations worldwide, from single panel, single loop installations to large multi-panel networks.

The precursor to the MxPro 5, it offers uncomplicated operation as standard and can be expanded with a huge range of peripherals and accessories to meet most needs and configurations.

MxPro 4 utilises a simplified version of our Dynamix Tools fire system software allowing easy set up and management.



BS EN 54-2 & 4

Features

- 1, 2, 4 or 8 loop formats
- Up to 254 devices per loop (Protocol dependent)
- Up to 1,000 fire detection zones
- Up to 203,200 devices per network
- True peer-to-peer networking
- Networkable up to 200 nodes
- Supports intelligent remote terminals, BMS interface, IP Gateway and I/O programmable I/O devices
- Circuit monitoring of local panel circuits
- Autolearn and Loop Detection
- Simple Select & Click programming
- 1,000 event log entries
- Simplified logic delivers click and go configuration
- Built in voltage and current meters
- Quick start and protect – a working system after Autolearn
- Single area false alarm management facility
- Optional Peripheral Expansion Card
- Programmable logo on screen
- Compatible with Apollo Discovery and XP95, Argus Vega, Hochiki ESP and Nittan Evolution protocols
- Approved to EN54 parts 2 and 4

MxPro⁴

MxPro 4 - 1 Loop



- Single loop
- Maximum 7Ah internal batteries
- Maximum 12Ah internal batteries - large enclosure
- Aperture for 20 zone fire LEDs
- Optional programmable key switch

MxPro 4 - 2 Loop



- One or two loops
- Maximum 17Ah internal batteries
- Maximum 38Ah internal batteries – deep enclosure
- Up to 200 additional zone fire LEDs
- Up to 8 programmable key switches or 4 plus printer
- Plexi-glass door option

MxPro 4 - 4 Loop



- One to four loops
- Maximum 17Ah internal batteries
- Maximum 38Ah internal batteries – deep enclosure
- Up to 200 additional zone fire LEDs
- Up to 8 programmable key switches or 4 plus printer
- Plexi-glass door option

MxPro 4 - 8 Loop



- Two to eight loops
- Maximum 2 sets of 38Ah internal batteries
- Aperture for up to 200 zone fire LEDs
- Up to 8 programmable key switches or 4 plus printer

MxPro 4 - Remote Terminals



- Three types available including;
 - TouchControl touchscreen with active maps
 - Remote Display Terminal
 - Remote Control Terminal with additional Silence, Resound, Reset and Evacuate Keys
- Optional level 2 access enable key switch
- Integrated standard or fault-tolerant network interface with screen termination point
- Programmable display for up to 1,000 zones along with sector based controls

MxPro 4 - Peripherals

- 8-way input card
- 8-way relay output
- Monitored shop unit interface
- Optional Peripheral Expansion card supports the following
 - 4-way relay
 - 4-way sounder
 - General routing card

Panel Comparison

	MxPro 4	MxPro 5
Hardware Features		
Display Backlight	Green backlit display Manual contrast adjustment	White backlit display Improved efficiency with programmable dimming options Software driven contrast adjustment via menu
PC Connections	RS232	USB, RS232
Peripheral Expansion Bus	1 loop – n/a 2-8 loop – requires additional optional circuit card	Built in as standard on all panels Extended range of P-Bus option cards
Wiring Fault Monitoring	EN54-2: Open circuit, short circuit	EN54-2: Open circuit, short circuit EN54-13: Continuous checking for increases in resistance, (loose terminations), partial shorts etc.
Control Keys	Reset, Mute, Silence/Resound and Evacuate	Mute, Silence, Reset, LED Test, Resound, Evacuate and dedicated More Alarms buttons on control panels and large repeater Configurable keypad repeat keys
Front Panel Push Buttons	None	4 programmable function buttons on control panels and large repeater
Battery Charging	Charger current and voltage can be viewed on local display Built in battery temperature sensor	Charger current, voltage and temperature available from any display on a network Built in or remote battery temperature sensor
Zone LEDs	None as standard Option 20 zone fire red LED card on 1 loop Options for up to 200 red zone fire LEDs on 2-8 loops	20 integral red LED indicators included as standard on control panels and large repeater. Can be assigned to any fire zone or programmable for other uses. Up to 200 additional LEDs with Large, Deep and Extended enclosures. (Up to 50 in Medium enclosure). Options include red, yellow and (bi-colour) red/yellow or green/yellow column format with slide-in labels.
Programmable Input	None	Dedicated monitored switch input as standard on all panels
Programmable Key Switch Inputs	Requires additional optional key switch input card	Built in as standard on all panels
Printer	Optional on-board printer with built-in battery pack	Optional on-board printer. No additional battery pack required. Integral paper feed button. Printer fault conditions displayed on panel, prints customer logo
Standards	EN54-2 and 4	EN54-2, 4 and 13
Software Features		
Independent General Event and Fire Event Logs	Yes – control panels only Not on remote terminals	Yes – on all panels and repeaters Any panel can be configured as a network-wide main event log
Event log entries	1,000 + 500 Fire	5,000 + 500 Fire Additional logging for Investigation delays and any Enable/Disable actions
Timed Disable Options	Permanent only	Permanent or automatic timed re-enablement of any input or output device
Enable/Disable Inputs by zone	<ul style="list-style-type: none"> All Inputs All Inputs except Call Points Selected Inputs 	<ul style="list-style-type: none"> All Inputs Selected Inputs Only Automatic Inputs Only Manual Inputs All Other Inputs
Enable/Disable Outputs	All Local Panel sounders, relays or individual outputs	Disable by Output Purpose Configurable Disable Outputs Menu options include; Sounders, Relays, Beacons, Fire Routing, Fault Routing, Fire Protection, Pager, All or Selected Disablement of outputs across network configurable by sector mask
Real Time Clock	Yes - requires lithium battery	Yes - no lithium battery required
Languages	Supports Western European languages	Supports multiple different character sets (code pages) and languages

	MxPro 4	MxPro 5
Network Features		
Max devices per network	188,800	200,000
Max nodes on network	200	200
Sectors	50	200
Maximum Fire Zones Displayed	250 1 loop 1,000 2,4 and 8 loop	2,000 on all panels
Programming Features		
Independent Building Areas for False Alarm Management	Single area processing	201 areas per panel Local or Global Alarm Acknowledgment facility
Zone LEDs	No programmable options	All LEDs fully programmable PC configuration presented graphically Primary/secondary activation
Buzzer Options	No programmable options	Smart latch of faults Fault notification can resound daily Service option to Inhibit by time clock
Programmable Input actions	19	22 - including new Supervisory, Fire Routing and Fire Protection confirmed + Alarm Acknowledgement actions
Output Purpose	n/a	Output purpose configurable
Output Ringing styles	20	40 - Output activation priority configurable
Zone Qualifiers	15 categories of zone qualifiers	24 categories of zone qualifiers
Logic statements	500 Logic lines – Programmable options – <ul style="list-style-type: none"> • Inputs • General Events • Time Clocks 	1,500 Logic lines – Programmable options – <ul style="list-style-type: none"> • Inputs • Any 2 inputs • Zone qualifiers • Any 2 zones • General Events • Time Clocks
General Events	10 categories	36 categories
Blocking Rules	No options	Programmable blocking rules – by General Event or Output Groups
Service and Diagnostic Features		
Device History	n/a	For every device the time and date of the :- <ul style="list-style-type: none"> • Last activation • Last Test • Last Disable • Last Enable • Date Created
On-board Digital Storage Scope	n/a	Yes
View Panel Voltages and Currents	Available for local panel circuits only	Available from any MxPro 5 repeater or panel on the network.
View Panel Status	Local hardware and panel firmware version	View status of all panel circuits across network Firmware version of all internal hardware and peripheral devices can be viewed at the panel
Firmware updates	Panel firmware flash upgradable	All hardware flash upgradable via panel USB or serial port
Detector Status Information	View drift information at local panel	New Warning state allows any devices nearing drift contamination limits to be identified during routine servicing before a fault level is reached
Service tool	Download device information	Download device information Extract Event log information Download device History View drift (contaminated) status of detectors Network simulation and test facility

Advanced Networking

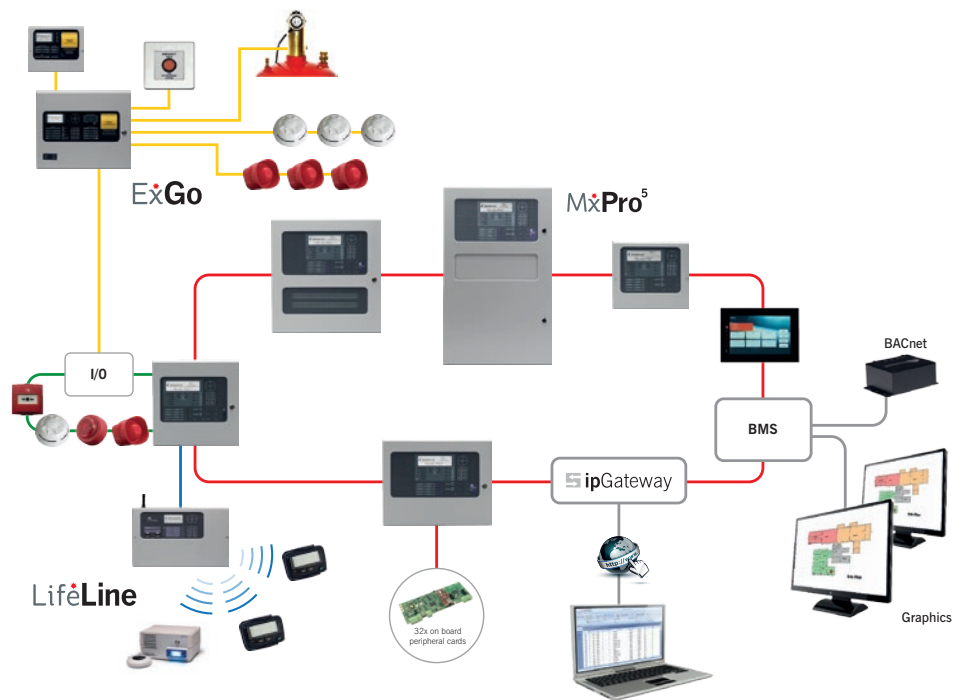
Our high performance network technology works across the MxPro range delivering the easiest setup and best performing fire panel networks available.

Advanced Networking allows all MxPro series control panels, remote terminals and network peripherals to be connected together using standard fire resistant two-core cable. It provides both the benefits of distributed intelligence and reduced installation costs whilst catering for the smallest two-panel network through to the largest 200 panel, wide-area, networked system. The network operates as a true peer-to-peer system and is therefore not reliant on a single 'master' panel to function. It allows information from any input or output device to be passed over the network and displayed on any MxPro control panel or remote terminal as required. Details include Fire, General Alarm, Pre-alarm, Fault, Control Inputs and Disablement as well as analogue values, test instructions and status information.

The zoning facility allows the networked system to share up to 2,000 zones giving non-confusing indication and allowing true peer-to-peer cross panel report, control and site-wide cause and effect functionality.

Simply adding and connecting a network card allows any MxPro control panel or remote terminal to be networked. Autolearning the devices, adding text and assigning the zone numbers allows a working and compliant fire system to be achieved easily. All other nodes on the system will be instantly aware of a panel as soon as it is given a valid network node address, allowing additional panels to be added at any time with a minimum amount of reprogramming.

All panels provide valuable diagnostic and status information and also have the facility to prevent the transmission of fires or faults during commissioning. For more complex systems, our Dynamix Tools software makes for easy configuration of complicated cause-and-effect, whilst all the configuration data is contained within one user-friendly network configuration file.



ipGateway

ipGateway provides a secure, remote internet connection to an Advanced fire system via a standard web browser. No special software is required.

The state of each device on the network is displayed and users can Enable/Disable zones, Enable/Disable devices, Reset, Mute, and Silence/Resound sounders on the network.

The ipGateway can also be configured to react to events on the network by sending emails or SMS messages to configured recipients.

PC-Net Graphical Control Software

- Highly configurable to specific system
- Our graphical control software monitors the entire fire system through site maps, text and icons
- Users can isolate by selecting icons and devices
- Fire panel controls include Mute, Silence, Re-sound, Reset, Disable/Enable and Evacuate
- Event reports and log with analysis features

Advanced BMS

The BMS Interface allows any MxPro system to interconnect and communicate with independent 3rd party BMS (building management systems) as well as PC based graphical control systems. This allows the fire system to be managed using existing fire or facilities management systems.

Physical connection to the external system is via a serial connection allowing the external BMS/Graphics systems to issue commands and receive information whilst the BMS interface handles all network traffic and event prioritisation. Multiple BMS interfaces can be connected to an AdNet network allowing independent connections to a wide range of control systems.

Dynamix Tools

Dynamix Tools is fire system software designed for users. It is easy to operate, easy to understand and makes the complicated simple.

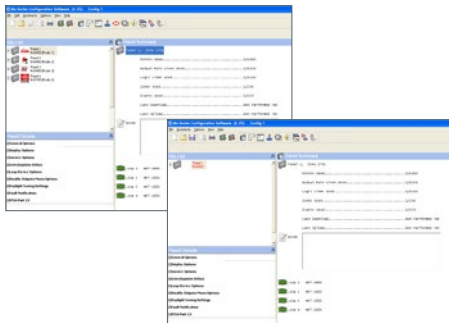
Dynamix Tools comprises a range of specific tools allowing users to achieve what they want quickly and easily, not get bogged down in large, clumsy and complicated software.

Dynamix Tools is being continually developed for the MxPro 5 panel range, adding new features and performance enhancements. Recently these have included comprehensive false alarm management and alarm verification features.

Our position in the global fire industry means we help guide legislation and can implement software changes quickly, keeping our customer systems right up to date. We also listen closely to our customers and often produce features for specific client requirements.

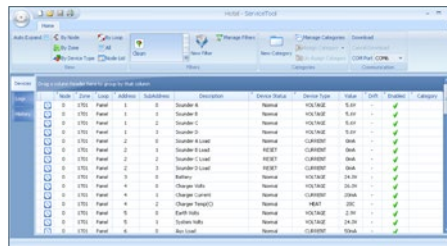
Config Tool

- Full configuration of single panel or network system
- Automatic design check of site configuration
- Assistants menu helps the engineer to easily configure panels
- Import, export information and print configuration reports



Service Tool

- Extract device information and event logs from single or multiple panels
- Device History including last activation, test, enable, disable and date created
- User defined filters allow data to be grouped and searched in many different ways
- View device status, analogue values and drift (contaminated) information
- Network simulation and test feature
- Categorise events and create User defined reports



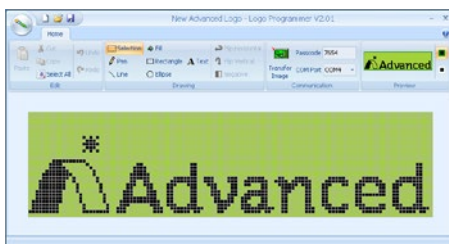
Terminal Tool

- Virtual panel display supports remote interrogation
- Direct USB/RS232 or remote Modem/IP connection
- Real time status information and control
- Event log can be downloaded



Logo Tool

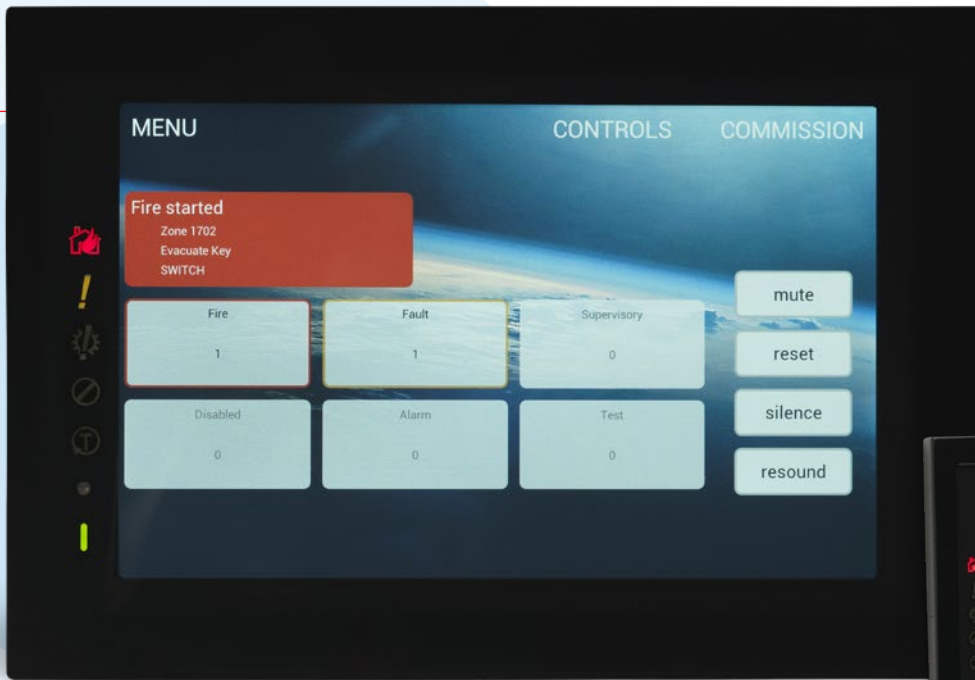
- Allows the installer's logo to be displayed on the panels graphical LCD display during Normal Operation
- Uploads standard bitmap images
- Tool allows creation of logos
- JPG and GIF images can be imported



Map App

- Used to easily add site maps to TouchControl touch screen repeater
- Can use any illustration from a photo to a line drawing, isometric or plan.
- Simply draw hotspots onto drawing to add fire zone
- Export to microSD card to add to TouchControl RCT





TouchControl

Touchscreen. Remote Control Terminal. Active Maps & Zone Plans.

TouchControl is Advanced's innovative new remote control terminal and repeater.

Easily installed, its HD display enhances any architectural environment and takes system control and monitoring to the next level.

Features:

- **Attractive, low-profile HD display**
10" screen enhances prestigious environments.
- **Easy Slide-in Installation**
Two-part slide in assembly for quick first fix and final install.
- **Cost Minimising**
It's a stand alone unit, you don't add cost to the fire panel with a compromised touchscreen.
- **Easily Configured**
Fully active remote control terminal and network device almost immediately after installation.
- **Interactive Maps and Zone Plans**
Easily added, using any diagram via our Map App.
- **'At a Glance' System Status**
Unique interface allows easy monitoring and management of zones and devices.
- **Complete Control**
Three level access to all the controls you'd find on an Advanced RCT via an easy to use interface.
- **Customisable Screen**
Choose from the preloaded background screens or add your own including installer logos. Run reception presentations. Immediately reverts to Fire use when system signal received.

Visit touchcontrol.advancedco.com or contact us now for a demo



Fast Hardware

Simple Software

Intelligent Loop Devices

AlarmCalm

Red Line False Alarms

Complete False Alarm Management.

AlarmCalm uses fast hardware, powerful software and intelligent loop devices to build a total solution to false alarms that's powerful and easy to configure.

The AlarmCalm Button is a fully intelligent verification device that is installed on the loop and works with the AlarmCalm software to allow occupants to acknowledge a fire alarm signal locally, if they believe it has been caused by say smoke from toast or shower vapour.

Features:

- **Complete Case-and-Effect**
In depth control over alarm verification and investigation delays to outputs.
- **Customised Management for any Site**
Divide your building(s) into Building Areas, each with quickly applied group or unique false alarm management settings. 200 Building Areas per panel or 40,000 per network.
- **Unlimited points**
No restriction to the number of points in a Building Area and you can configure by point.
- **Global Acknowledgement**
Panel inputs can be programmed to manage verification and output delays.
- **Full Event Log**
All verification and output delays recorded in panel event logs.
- **Flexible Verification**
Set verification by Building Area, day/night, on or off, change verification times, verification by second device of device mode change.
- **Multiple Verification Inputs and Outputs**
Inputs can include optical, heat and multisensors, callpoints and AlarmCalm Button or other input modules. Outputs can be sounders, beacons and relays etc. Sounder ring styles can be configured.
- **Failsafe Operation**
Total control over verification times. Users can only extend Verification once. Set max number of areas in Verification before full Fire is signaled.
- **Easy Management of Outputs**
Output delays are handled in exactly the same way as Verifications, making set up very simple.

Visit alarmcalm.advancedco.com or contact us now for a demo



Advanced360*

Our Legendary Customer Support. In Person and Online.

Advanced360 offers total customer care from a staff of industry experts and engineers.

Support can cover help specifying a system or during installation or maintenance. Advanced360 also delivers full, free-of-charge installer training, online and telephone support and system and fault modeling services. It's advanced, end-to-end fire system support, free to all customers.

New Lifetime Support Portals

Advanced360 now offers our customers personalised support for their whole Advanced careers, via online portals. Services include:

- **Technical Support**
Open and view support tickets and see full support history.
- **Training**
View and book training slots. Download your certificates at any time.
- **Software**
Download software and save software packages by installation/site.
- **Literature**
Manuals, specifications and technical information etc all available for download.
- **Product Demos**
Book a demo and request brochures, literature and technical information.
- **Approved Partner Certificates**
Available for order and download.
- **Warranty Certificates**
Download warranty certs for your sites. Include your company details for end users. Request marketing and PR support for interesting sites.

Sign up now at 360.advancedco.com



AdSpecials

The Best Custom Build in the Industry.

Advanced's special engineering team develops unique interfaces and panel solutions to specific customer requirements.

Solutions can include mimic panels, special enclosures, environmental protection, high specification control units, third party system monitors, interfaces and control units and 8+ loop panels in a variety of enclosures.

The AdSpecials team can manage the whole process from specification and design to manufacture and delivery and will project manage the process so deadlines are maintained.



Contact us now to discuss your requirements



Project Leadership

The quality, performance and ease-of-use of Advanced's fire systems means we are a supplier of choice to fire and facilities professionals globally.

Our systems hold global approvals and can scale from single panel, single loop to huge, multi-loop, high-speed networks covering vast areas.

We are specified and installed in some of the most prestigious and challenging locations in over 60 countries worldwide.



Visit www.advancedco.com for more info.

MxPro Parts list

Product Code	Description
--------------	-------------

MxPro 5 Fire Control Panels

MxPro 5 Fire Control panels (Apollo/Hochiki Protocol)	
MxPro 5 - 1 Loop Panels	
MX-5101	1 Loop fire panel in small enc.
MX-5101M	1 Loop fire panel in medium enc.
MX-5101L	1 Loop fire panel in large enc.
MX-5101D	1 Loop fire panel in large-deep enc.
MX-5101R	1 Loop 19" rack mount FACP

MxPro 5 - 2 Loop Panels	
MX-5201	1-2 Loop fire panel c/w 1 loop card in medium enc.
MX-5201L	1-2 Loop fire panel c/w 1 loop card in large enc.
MX-5201D	1-2 Loop fire panel c/w 1 loop card in large-deep enc.
MX-5201R	1-2 Loop 19" rack mount FACP c/w 1 loop card
MX-5202	1-2 Loop fire panel c/w 2 loop cards in medium enc.
MX-5202L	1-2 Loop fire panel c/w 2 loop cards in large enc.
MX-5202D	1-2 Loop fire panel c/w 2 loop cards in large-deep enc.
MX-5202R	1-2 Loop 19" rack mount FACP c/w 2 loop cards

MxPro 5 - 4 Loop Panels	
MX-5401	1-4 Loop fire panel c/w 1 loop card in large enc.
MX-5401D	1-4 Loop fire panel c/w 1 loop card in deep enc.
MX-5401R	1-4 Loop 19" rack mount FACP c/w 1 loop card
MX-5401E	1-4 Loop fire panel c/w 1 loop card in extended enc.
MX-5402	1-4 Loop fire panel c/w 2 loop cards in large enc.
MX-5402D	1-4 Loop fire panel c/w 2 loop cards in deep enc.
MX-5402R	1-4 Loop 19" rack mount FACP c/w 2 loop cards
MX-5402E	1-4 Loop fire panel c/w 2 loop cards in extended enc.
MX-5403	1-4 Loop fire panel c/w 3 loop cards in large enc.
MX-5403D	1-4 Loop fire panel c/w 3 loop cards in deep enc.
MX-5403R	1-4 Loop 19" rack mount FACP c/w 3 loop card
MX-5403E	1-4 Loop fire panel c/w 3 loop cards in extended enc.
MX-5404	1-4 Loop fire panel c/w 4 loop cards in large enc.
MX-5404D	1-4 Loop fire panel c/w 4 loop cards in deep enc.
MX-5404R	1-4 Loop 19" rack mount FACP c/w 4 loop card
MX-5404E	1-4 Loop fire panel c/w 4 loop cards in extended enc.

MxPro 5 - 8 Loop Panels	
MX-5802	2-8 Loop fire panel c/w 2 loop cards. Standard network
MX-5803	2-8 Loop fire panel c/w 3 loop cards. Standard network
MX-5804	2-8 Loop fire panel c/w 4 loop cards. Standard network
MX-5805	2-8 Loop fire panel c/w 5 loop cards. Standard network
MX-5806	2-8 Loop fire panel c/w 6 loop cards. Standard network
MX-5807	2-8 Loop fire panel c/w 7 loop cards. Standard network
MX-5808	2-8 Loop fire panel c/w 8 loop cards. Standard network
MX-5802/FT	2-8 Loop fire panel c/w 2 loop cards. Fault-tolerant network
MX-5803/FT	2-8 Loop fire panel c/w 3 loop cards. Fault-tolerant network
MX-5804/FT	2-8 Loop fire panel c/w 4 loop cards. Fault-tolerant network
MX-5805/FT	2-8 Loop fire panel c/w 5 loop cards. Fault-tolerant network
MX-5806/FT	2-8 Loop fire panel c/w 6 loop cards. Fault-tolerant network
MX-5807/FT	2-8 Loop fire panel c/w 7 loop cards. Fault-tolerant network
MX-5808/FT	2-8 Loop fire panel c/w 8 loop cards. Fault-tolerant network

MxPro 5 Series Fire Control panels (AV Protocol)	
MxPro 5 - 1 Loop V Series Panels	
MX-5101V	1 Loop fire panel in small enc.
MX-5101VM	1 Loop fire panel in medium enc.
MX-5101VL	1 Loop fire panel in large enc.
MX-5101VD	1 Loop fire panel in large-deep enc.
MX-5101VR	1 Loop 19" rack mount FACP

Product Code	Description
--------------	-------------

MxPro 5 - 2 Loop V Series Panels	
MX-5201V	1-2 Loop fire panel c/w 1 loop card in medium enc.
MX-5201VL	1-2 Loop fire panel c/w 1 loop card in large enc.
MX-5201VD	1-2 Loop fire panel c/w 1 loop card in large-deep enc.
MX-5201VR	1-2 Loop 19" rack mount FACP c/w 1 loop card
MX-5202V	1-2 Loop fire panel c/w 2 loop cards in medium enc.
MX-5202VL	1-2 Loop fire panel c/w 2 loop cards in large enc.
MX-5202VD	1-2 Loop fire panel c/w 2 loop cards in large-deep enc.
MX-5202VR	1-2 Loop 19" rack mount FACP c/w 2 loop cards

MxPro 5 - 4 Loop V Series Panels	
MX-5401V	1-4 Loop fire panel c/w 1 loop card in large enc.
MX-5401VD	1-4 Loop fire panel c/w 1 loop card in deep enc.
MX-5401VR	1-4 Loop 19" rack mount FACP c/w 1 loop card
MX-5401VE	1-4 Loop fire panel c/w 1 loop card in extended enc.
MX-5402V	1-4 Loop fire panel c/w 2 loop cards in large enc.
MX-5402VD	1-4 Loop fire panel c/w 2 loop card in deep enc
MX-5402VR	1-4 Loop 19" rack mount FACP c/w 2 loop cards
MX-5402VE	1-4 Loop fire panel c/w 1 loop card in extended enc.
MX-5403V	1-4 Loop fire panel c/w 3 loop cards in large enc.
MX-5403VD	1-4 Loop fire panel c/w 3 loop card in deep enc
MX-5403VR	1-4 Loop 19" rack mount FACP c/w 3 loop card
MX-5403VE	1-4 Loop fire panel c/w 1 loop card in extended enc.
MX-5404V	1-4 Loop fire panel c/w 4 loop card in large enc.
MX-5404VD	1-4 Loop fire panel c/w 4 loop card in deep enc
MX-5404VR	1-4 Loop 19" rack mount FACP c/w 4 loop card
MX-5404VE	1-4 Loop fire panel c/w 1 loop card in extended enc.

MxPro5 - 8 Loop V Series Panels	
MX-5802V	2-8 Loop fire panel c/w 2 loop cards. Standard network
MX-5803V	2-8 Loop fire panel c/w 3 loop cards. Standard network
MX-5804V	2-8 Loop fire panel c/w 4 loop cards. Standard network
MX-5805V	2-8 Loop fire panel c/w 5 loop cards. Standard network
MX-5806V	2-8 Loop fire panel c/w 6 loop cards. Standard network
MX-5807V	2-8 Loop fire panel c/w 7 loop cards. Standard network
MX-5808V	2-8 Loop fire panel c/w 8 loop cards. Standard network
MX-5802V/FT	2-8 Loop fire panel c/w 2 loop cards. Fault tolerant network
MX-5803V/FT	2-8 Loop fire panel c/w 3 loop cards. Fault tolerant network
MX-5804V/FT	2-8 Loop fire panel c/w 4 loop cards. Fault tolerant network
MX-5805V/FT	2-8 Loop fire panel c/w 5 loop cards. Fault tolerant network
MX-5806V/FT	2-8 Loop fire panel c/w 6 loop cards. Fault tolerant network
MX-5807V/FT	2-8 Loop fire panel c/w 7 loop cards. Fault tolerant network
MX-5808V/FT	2-8 Loop fire panel c/w 8 loop cards. Fault tolerant network

MxPro 5 Series Fire Control panels (Nittan Evolution Protocol)	
--	--

MxPro 5 - 1 Loop N Series Panels	
MX-5101N	1 Loop fire panel in small enc.
MX-5101NM	1 Loop fire panel in medium enc.
MX-5101NL	1 Loop fire panel in large enc.
MX-5101ND	1 Loop fire panel in large-deep enc.
MX-5101NR	1 Loop 19" rack mount FACP

MX-5200N Series panels	
MX-5201N	1-2 Loop fire panel c/w 1 loop card
MX-5201NL	1-2 Loop fire panel c/w 1 loop card in large enc.
MX-5201ND	1-2 Loop fire panel c/w 1 loop card in large-deep enc.
MX-5201NR	1-2 Loop 19" rack mount FACP c/w 1 loop card
MX-5202N	1-2 Loop fire panel c/w 2 loop cards
MX-5202NL	1-2 Loop fire panel c/w 2 loop cards in large enc.
MX-5202ND	1-2 Loop fire panel c/w 2 loop cards in large-deep enc.
MX-5202NR	1-2 Loop 19" rack mount FACP c/w 2 loop cards

MxPro Parts list

Product Code	Description
MX-5400N Series panels	
MX-5401N	1-4 Loop fire panel c/w 1 loop card in large enc.
MX-5401ND	1-4 Loop fire panel c/w 1 loop card in deep enc.
MX-5401NR	1-4 Loop 19" rack mount FACP c/w 1 loop card
MX-5401NE	1-4 Loop fire panel c/w 1 loop card in extended enc.
MX-5402N	1-4 Loop fire panel c/w 2 loop cards in large enc.
MX-5402ND	1-4 Loop fire panel c/w 2 loop card in deep enc.
MX-5402NR	1-4 Loop 19" rack mount FACP c/w 2 loop cards
MX-5402NE	1-4 Loop fire panel c/w 1 loop card in extended enc.
MX-5403N	1-4 Loop fire panel c/w 3 loop cards in large enc.
MX-5403ND	1-4 Loop fire panel c/w 3 loop card in deep enc.
MX-5403NR	1-4 Loop 19" rack mount FACP c/w 3 loop card
MX-5403NE	1-4 Loop fire panel c/w 1 loop card in extended enc.
MX-5404N	1-4 Loop fire panel c/w 4 loop card in large enc.
MX-5404ND	1-4 Loop fire panel c/w 4 loop card in deep enc.
MX-5404NR	1-4 Loop 19" rack mount FACP c/w 4 loop card
MX-5404NE	1-4 Loop fire panel c/w 1 loop card in extended enc.

MX-5800N Series panels	
MX-5802N	2-8 Loop fire panel c/w 2 loop cards. Standard network
MX-5803N	2-8 Loop fire panel c/w 3 loop cards. Standard network
MX-5804N	2-8 Loop fire panel c/w 4 loop cards. Standard network
MX-5805N	2-8 Loop fire panel c/w 5 loop cards. Standard network
MX-5806N	2-8 Loop fire panel c/w 6 loop cards. Standard network
MX-5807N	2-8 Loop fire panel c/w 7 loop cards. Standard network
MX-5808N	2-8 Loop fire panel c/w 8 loop cards. Standard network
MX-5802N/FT	2-8 Loop fire panel c/w 2 loop cards. Fault tolerant network
MX-5803N/FT	2-8 Loop fire panel c/w 3 loop cards. Fault tolerant network
MX-5804N/FT	2-8 Loop fire panel c/w 4 loop cards. Fault tolerant network
MX-5805N/FT	2-8 Loop fire panel c/w 5 loop cards. Fault tolerant network
MX-5806N/FT	2-8 Loop fire panel c/w 6 loop cards. Fault tolerant network
MX-5807N/FT	2-8 Loop fire panel c/w 7 loop cards. Fault tolerant network
MX-5808N/FT	2-8 Loop fire panel c/w 8 loop cards. Fault tolerant network

MxPro 5 Remote Terminals	
MX-5010	Remote display terminal (RDT). Standard network
MX-5010/FT	Remote display terminal (RDT). Fault tolerant
MX-5020	Remote control terminal (RCT) small. Standard network
MX-5020/FT	Remote control terminal (RCT) small. Fault tolerant
MX-5030	Remote control terminal (RCT) large. Standard network
MX-5030/FT	Remote control terminal (RCT) large. Fault tolerant

Touch Control	
TOUCH-10	Touch-screen terminal (standard network)
TOUCH-10/FT	Touch-screen terminal (fault-tolerant network)
TOUCH-10-SBB	Touch-screen terminal - surface back box

Peripheral Expansion Network Node NEW	
MXP-545	PENN - (standard network)
MXP-545/FT	PENN - (fault-tolerant network)

Product Code	Description
MxPro 5 Peripherals	
<i>Note; Additional Peripherals listed under MxPro4 / MxPro 5 Universal Peripherals</i>	
MXP-501	Remote battery temperature sensor
MXP-502	Loop driver card - Apollo, Hochiki, Argus, Vega
MXP-567	Loop driver card - Nittan
MXP-503 *	Network card - standard
MXP-505	Sounder (pt13) active EOL
MXP-506	Routing termination card
MXP-507 *	2-way relay card
MXP-509 *	Network card - fault tolerant
MXP-512 *	Printer assembly
MXP-509	Spare paper roll for Mxp-512 printer
MXP-532 *	Routing / protection interface
MXP-536 *	P-BUS 8-way conventional zone card
MXP-537 *	P-BUS 10-way switch input card
MXP-538	P-BUS 16-way switch (form factor) module 16 switches, 3 integrated, programmable LED's per switch (red, yellow, green)
MXP-539	P-BUS MIMIC driver card (16 input + 48 output) 16 switch inputs and 48 LED driver outputs. Supports up to 5 Mxp-052 10 relay output modules
MXP-547 *	ESPA pager interface

* Add F - for fitted

MxPro5 AlarmCalm	
MXP-541A-002	AlarmCalm button w buzzer (Apollo)
MXP-541V-002	AlarmCalm button w buzzer (Argus)

MxPro 5 LED Indication	
MXP-513M-050RD *	50 Zone fire (red) - medium enc
MXP-513M-050RY *	25 Zone fire (red) + fault (yel) - medium enc.
MXP-513M-050YL *	50 Zone fault (yel) - medium enc.
MXP-513L-050RD *	50 Zone fire (red) - large enc
MXP-513L-050RY *	25 Zone fire (red) + fault (yel) - large enc.
MXP-513L-050YL *	50 Zone fault (yel) - large enc.
MXP-513L-100RD *	100 Zone fire (red) - large enc.
MXP-513L-100RY *	50 Zone fire (red) + fault (yel) - large enc.
MXP-513L-100YL *	100 Zone fault (yel) - large enc.
MXP-513L-200RY *	200 Zone - large enc (red/yel)
MXP-513L-050CRY *	50 Zone column format - large enc (red/yel)
MXP-513L-050CRYG *	50 Zone column format - large enc. (30 x red/yel - 20 grn/yel)
MXP-513-050RD *	50 Zone fire (red) - extended enc.
MXP-513-050RY *	25 Zone fire (red) + fault (y) - extended enc.
MXP-513-050YL *	50 Zone fault (yel) - extended enc.
MXP-513-100RD *	100 Zone fire (red) - extended enc.
MXP-513-100RY *	50 Zone fire (red) + fault (y) - extended enc.
MXP-513-100YL *	100 Zone fault (yel) - extended enc.
MXP-513-200RY *	200 Zone - extended enc. (red/yel)
MXP-513-050CRY *	50 Zone column format - extended enc. (red/yel)
MXP-513-050CRYG *	50 Zone column format - extended enc. (30 x red/yel - 20 grn/yel)

* Add F - for fitted

MxPro5 Modems	
MXP-528	Modem card (24V)
MXP-528F	Modem card (24V) - fitted*
MXP-028-BX	Modem card (24V) - boxed

* Can be fitted to a medium, large or extended enclosure only

Product Code	Description
MxPro 5 Key Switches	
MXP-511	Access enable key switch
MXP-511F	Access enable key switch - fitted
MXP-516	2-POS key switch (trapped)
MXP-516F	2-POS key switch (trapped) - fitted
MXP-517	2-POS key switch (untrapped)
MXP-517F	2-POS key switch (untrapped) - fitted
MXP-515	3-POS key switch (trapped)
MXP-515F	3-POS key switch (trapped) - fitted
MXP-518-001	Access enable key switch for 5010/5020
MXP-518-001F	Access enable key switch for 5010/5020 - fitted
MXP-518-002	Access enable key switch for 5030
MXP-518-002F	Access enable key switch for 5030 - fitted
MXP-519	2-POS key switch (Mom - trapped)
MXP-519F	2-POS key switch (Mom - trapped) - fitted

MxPro 5 Spares	
MXS-501 *	Spare single loop base card c/w PSU (no loop cards) <i>*Add V for AV protocol, N for Evolution</i>
MXS-502 *	Spare two loop base card c/w PSU (no loop cards) <i>*Add V for AV protocol</i>
MXS-503 *	Spare four loop base card c/w PSU (no loop cards) <i>*Add V for AV protocol</i>
MXS-504	Spare display card
MXS-506	Spare MX-5010 card only
MXS-506/FT	Spare MX-5010 card only - fault-tolerant
MXS-507	Spare MX-5020 card only
MXS-507/FT	Spare MX-5020 card only - fault-tolerant
MXS-508	Spare MX-5030 card only
MXS-508/FT	Spare MX-5030 card only - fault-tolerant
MXS-511	Spare access enable key switch (Lorlin style)
MXS-516	Spare 2-position key switch - trapped (Lorlin style)
MXS-517	Spare 2-position key switch - un-trapped (Lorlin style)
MXS-511-KEY	Spare Mxp-511 access enable key
MXS-518	MX-5000 spare kits
MXS-519	MX-5000 rack mount spare kit
MXS-520	MX-5000 remote terminal spares kit
MXS-521	MX-5000 battery leads
MXS-522	MX-5000 rack mount battery leads
MXS-5-FP-S	Spare fascia plate and membrane - small
MXS-5-FP-ML	Spare fascia plate and membrane - medium / large

MxPro 5 Flushing Bezels	
MXM-501	Semi-flushing bezel - small enc.
MXM-502	Semi-flushing bezel - medium enc.
MXM-503	Semi-flushing bezel - large enc.
MXM-509	Semi-flushing bezel - MX-5030 RCT - large
MXM-521	Semi-flushing bezel - MX-5010 / 5020
MXM-536	Semi-flushing bezel - extended enc.

MxPro 5 Plexi glass (Lexan) Door - Retro-fit	
MXM-507	Glazed door kit - large enclosure
MXM-507Z	Glazed door kit (double aperture) - large enc.
MXM-508	Glazed door kit - medium enclosure
MXM-508Z	Glazed door kit (double aperture) - medium enc.
MXS-505	Spare key - MxPro 5 glazed door
MXM-538-D1	Glazed door kit with zone aperture - extended enc.
MXM-538-D2	Glazed door kit with 2 x glazed apertures - extended enc.
MXM-538-D3	Glazed door kit with mimic aperture - extended enc.

Product Code	Description
MxPro 5 Enclosures	
MXM-504	Medium termination enc.
MXM-505	Large termination enc.
MXM-506	Large-deep termination enc.
MXM-516	Medium battery (18ah) / utility enc.
MXM-517	Large battery (18ah) / utility enc.
MXM-518	Deep utility enc.
MXM-519	Chassis mounting plate for utility enc. (3 cards)
MXM-546	MX-5000 deep battery (45ah) enc.
MXM-522-BB	Small enc. - spare back box
MXM-522-D1	Small enc. - spare door
MXM-523-BB	Medium enc. - spare back box
MXM-523-D1	Medium enc. - spare door
MXM-523-D2	Medium enc. - spare door (c/w zone aperture)
MXM-524-BB	Large enc. - spare back box
MXM-524-D1	Large/deep enc. - spare door
MXM-524-D2	Large/deep enc. - spare door (c/w zone aperture)
MXM-524-D3	Large/deep enc. - spare door (c/w 2 x switch apertures)
MXM-524-D4	Large/deep enc. - mimic door with single aperture
MXM-524-D5	Large/deep enc. - blank door
MXM-525-BB	Deep enclosure - spare back box
MXM-530	Cable clamp
MXM-531	Medium document enc.
MXM-532	Large document enc.
MXM-533	Modem/ESPA/BMS interface enc.
MXM-537-BB	Extended enc. - back box
MXM-537-BP	Extended enc. - Blank plate for zone LED aperture
MXM-537-D1	Extended enc. - spare door
MXM-537-D2	Extended enc. - spare panel door with mimic aperture
MXM-543-BB	Mx-5010/5020 - spare back box
MXM-544-BB	Mx-5030 - spare back box
MXM-543-D1	Mx-5010/5020 - spare panel cover
MXM-543-D2	Mx-5010/5020 - spare panel cover + k/s app
MXM-544-D1	Mx-5030 - spare panel cover
MXM-543-D2	Mx-5030 - spare panel cover + k/s app

MxPro 5 Special Finishes	
MXM-501-SSB	Semi-flushing bezel - small enc. stainless steel brushed
MXM-501-SSM	Semi-flushing bezel - small enc. stainless steel mirrored
MXM-502-SSB	Semi-flushing bezel - medium enc. stainless steel brushed
MXM-502-SSM	Semi-flushing bezel - medium enc. stainless steel mirrored
MXM-503-SSB	Semi-flushing bezel - large enc. stainless steel brushed
MXM-503-SSM	Semi-flushing bezel - large enc. stainless steel mirrored
MXM-509-SSB	Semi-flushing bezel - RCT large. Stainless steel brushed
MXM-509-SSM	Semi-flushing bezel - RCT large stainless steel mirrored
MXM-521-SSB	Semi-flushing bezel - MX-5010 / 5020 stainless steel brushed
MXM-521-SSM	Semi-flushing bezel - MX-5010 / 5020 stainless steel mirrored
MXM-522-D1-SSB *	Small enc. - spare door. Stainless steel brushed
MXM-522-D1-SSM	Small enc. - spare door. Stainless steel mirrored
MXM-523-D1-SSB *	Medium enc. - spare door. Stainless steel brushed
MXM-523-D1-SSM	Medium enc. - spare door. Stainless steel mirrored
MXM-523-D2-SSB *	Medium enc. - spare door (c/w zone aperture). Stainless steel brushed
MXM-523-D2-SSM	Medium enc. - spare door (c/w zone aperture). Stainless steel mirrored
MXM-524-D1-SSB *	Large/deep enc. - spare door. Stainless steel brushed
MXM-524-D1-SSM	Large/deep enc. - spare door. Stainless steel mirrored
MXM-524-D2-SSB *	Large/deep enc. - spare door (c/w zone aperture). Stainless steel brushed

MxPro Parts list

Product Code	Description
MXM-524-D2-SSM	Large/deep enc. - spare door (c/w zone aperture). Stainless steel mirrored
MXM-543-D1-SSB	MX-5010/5020 - panel cover. Stainless steel brushed
MXM-543-D1-SSM	MX-5010/5020 - panel cover. Mirror polished
MXM-543-D2-SSB	MX-5010/5020 - panel cover + KS Ap. Stainless steel brushed.
MXM-543-D2-SSM	MX-5010/5020 - panel cover + KS Ap. Mirror polished
MXM-544-D1-SSB	MX-5030 RCT - panel cover. Stainless steel brushed.
MXM-544-D1-SSM	MX-5030 RCT - panel cover. Mirror polished
MXM-544-D2-SSB	MX-5030 RCT - panel cover + KS Ap. Stainless steel brushed
MXM-544-D2-SSM	MX-5030 RCT - panel cover + KS Ap. Mirror polished
MXM-524-BB-SSB	Spare large back box for use w/SS door (MW334E)
MXM-523-BB-SSB	Spare medium back box for use w/SS door (MW334E)
MXM-522-BB-SSB	Spare small back box for use w/SS door (MW334E)
MXM-525-BB-SSB	Spare deep back box for use w/SS door (MW334E)

* Add F - fitted (includes Silver back box & hinge strip)

MxPro 5 Rack Mount Enclosure	
MXM-510-16U	IP55 19" Rack mount enclosure - 16U high
MXM-510-20U	IP55 19" Rack mount enclosure - 20U high
MXM-510-KL	CAM key-lock kit for outer door
MXM-510-BS	19" Rack mount - battery shelf
MXM-510-BS1	19" Rack mount - battery shelf lower
MXM-510-CP	19" Rack mount - chassis plate
MXP-513R-050RD	19" Rack mount 4U LED card - 50 zone fire (red)
MXP-513R-050RY	19" Rack mount 4U LED card - 50 zone fire/flt (r/y)
MXP-513R-050YL	19" Rack mount 4U LED card - 50 zone flt (yel)
MXP-513R-100RD	19" Rack mount 4U LED card - 100 zone fire (red)
MXP-513R-100RY	19" Rack mount 4U LED card - 100 zone fire/flt (r/y)
MXP-513R-100YL	19" Rack mount 4U LED card - 100 zone fault (yellow)
MXP-513R-200RY	19" Rack mount 4U programmable LED card - 200 zone (red/yel)
MXP-513R-050CRY	19" Rack mount 4U programmable LED card - 50 zone column format (red/yel)
MXP-513R-050CRYG	19" Rack mount 4U programmable LED card - 50 zone column format (30 x red/yel - 20 x grn/yel)
MXP-514	MxPro 5 rack AC filter card
MXM-511-1U	19" Rack mount blanking plate - 1U
MXM-511-2U	19" Rack mount blanking plate - 2U
MXM-511-3U	19" Rack mount blanking plate - 3U
MXM-511-4U	19" Rack mount blanking plate - 4U
MXM-511-6U	19" Rack mount blanking plate - 6U
MXM-511-1U-TOP	19" Rack mount blanking plate - 1U-TOP
MXM-512	19" Rack mount blanking LED plate - 4U
MXM-513-BB	19" Rack mount back box - 6U
MXM-513-BP	19" Rack mount switch / LED blank plate - 6U
MXM-513-D1	19" Rack mount door D1 blank - 6U
MXM-513-D2	19" Rack mount door D2 LED - 6U
MXM-513-D3	19" Rack mount door D1 c/w aperture - 6U
MXM-513-FP	19" Rack mount fascia plate blank - 6U
MXM-513-MF	19" Rack mount switch / LED mounting frame - 6U
MXM-514-BB	19" Rack mount back box - 8U
MXM-514-D1	19" Rack mount door D1 c/w aperture - 8U
MXM-514-FP	19" Rack mount fascia plate blank - 8U

Product Code	Description
MXM-515-6U	19" Rack mount chassis plate - 6U
MXM-515-8U	19" Rack mount chassis plate - 8U
MXM-535-D1	19" Rack mount 13U hinged door (accepts 9 x MXP-538 switch cards or blank plates)

MxPro 4 / MxPro 5 Universal Peripherals

Network Boosters and Convertors	
MXP-030	Standard network booster/isolator (DIN-rail module)
MXP-631-MM	Ad-Net / fibre optic converter multi-mode
MXP-631-SM	Ad-Net / fibre optic converter single-mode
MXP-542	24VDC - 24VDC convertor / isolator (for use with Mxp-631 Fibre network convertors and MxPro 5)

Mimic Driver Cards, Indicators & Network I/O Controllers	
MXP-020-100	100 way remote LED mimic driver (un-boxed)
MXP-020-100/FT	Fault tolerant 100-way remote LED mimic driver (un-boxed)
MXP-045	50-way network I/O controller (un-boxed)
MXP-045/FT	50 way fault-tolerant network I/O controller (un-boxed)
MXS-026	High intensity red LED & 600mm lead for Mxp-020 / 027 & 045
MXS-026-YEL	High intensity yellow LED & 600mm lead for Mxp-020 / 027 & 045
MXS-026-GRN	High intensity green LED & 600mm lead for Mxp-020 / 027 & 045
MXP-052	Mimic driven 10-way relay output card
MXP-052-DIN	Mimic driven 10-way relay output card in din-rail carrier
MXS-031-2T	2-Position key switch trapped for Mxp-045
MXS-031-2U	2-Position key switch un-trapped for Mxp-045
MXS-031-3U	3-Position key switch un-trapped for Mxp-045

P-Bus Expansion Cards	
MXP-034 (F)*	Peripheral bus - 4-way sounder card
MXP-034-BXP	Peripheral bus - 4-way sounder card with 4A PSU (boxed)
MXP-035(F)*	Peripheral bus - 4-way relay card
MXP-035-BXP	Peripheral bus - 4-way relay card with 1.5A PSU (boxed)

* Add F - for fitted (except Mx-4100, Mx-5100)

EN54-4 'Approved' Power Supply Units	
MXP-549	1.5A EN54-4 PSE & battery charger
MXP-550	3A EN54-4 PSE & battery charger
MXP-550/D	3A EN54-4 PSE & battery charger. Deep enc.
MXP-551	5A EN54-4 PSE & battery charger
MXP-551/D	5A EN54-4 PSE & battery charger. Deep enc.
MXP-049	1.5A EN54-4 PSU & charger (boxed - 7Ah battery capacity)
MXP-050-001	3A EN54-4 PSU & charger (boxed - 7Ah battery capacity)
MXP-050-002	3A EN54-4 PSU & charger (boxed - 17Ah battery capacity)
MXP-051	5A EN54-4 PSU & charger (boxed - 17Ah battery capacity)
MXP-051/D	5A EN54-4 PSU & charger (boxed - 38Ah battery capacity)

MxPro Input and Output Cards	
MXP-046	Damper interface module (Apollo protocol)
MXP-046-BX1	Damper interface module - boxed (Apollo protocol)
MXP-053	2-way input stretch / latch module

MxPro Interfaces	
MXP-510-BX	BMS / Graphics I/F (boxed)
MXP-510-BX/FT	BMS / Graphics I/F (boxed) fault tolerant
MXP-510	BMS / Graphics I/F (card only)
MXP-510/FT	BMS / Graphics I/F (card only) fault tolerant
MXP-547-BX	ESPA Pager interface (boxed)
MXP-554-BX	IP Gateway (boxed)

Product Code	Description
MXP-554-BX/FT	IP Gateway (boxed) fault tolerant
MXP-554	IP Gateway (card only)
MXP-554/FT	IP Gateway (card only) fault tolerant
MXP-642	Commander- BACnet / Modbus (IP) interface (standard/basic) **
MXP-642C	Commander- BACnet / Modbus (IP) interface (configured) **
23-PSU/250	Power supply for commander 12VDC 2.5A
* Add F - fitted (except Mx-4100, Mx-5100). ** Requires Mxp-510 BMS Interface	

Dynamix Tools PC Software	
See "Cables & Connectors" section for spare and USB compatible upload / download leads	
PC-NET-003	MxPro configuration software & lead
PC-NET-003-USB	MxPro configuration software & USB upload/download lead
PC-NET-004	MxPro remote dial-up software (virtual panel)
PC-NET-005-L1	Graphical control software* standard version up to 3 panels
PC-NET-005-L2	Graphical control software* standard version up to 15 panels
PC-NET-005-L2p	Graphical control software* premium version up to 15 panels
PC-NET-005-L3	Graphical control software* standard version up to 200 panels
PC-NET-005-L3p	Graphical control software* premium version up to 200 panels
PC-NET-005-SWM	Smart watch module
PC-NET-005-SWM6	Smart watch module (4-6 panel)
PC-NET-005-SWM15	Smart watch module (7-15 panel)
PC-NET-005-SWM4R	Smart watch module - 4 inputs
PC-NET-005-SCU	Smart cube unit
PC-NET-05-L1R-L2R	Dongle upgrade L1R - L2R
PC-NET-05-L2R-L3R	Dongle upgrade L2R to L3R
PC-NET-05-L2R-L2P	Dongle upgrade L2R to L2P
PC-NET-05-L2P-L3P	Dongle upgrade L2P to L3P
PC-NET-05-L3R-L3P	Dongle upgrade L3R to L3P
PC-NET-007	MxPro logo programming software
PC-NET-015	MxPro service tool software
* requires Mxp-510 BMS interface	

Cables & Connectors (Upload/Download Leads)	
UP-001	RS232 9-way to 3-way plug in connector (MX upload/download lead)
UP-006	USB upload /download lead for MX config software

MxPro 4 Fire Control Panels (Apollo/Hochiki Protocol)	
MxPro 4 - 1 Loop panels	
MX-4100	1 Loop fire panel (no loop driver required)
MX-4100/L	1 Loop fire panel with lockable hinged door
MX-4100/LG	1 Loop fire panel c/w lockable hinged door & Lexan (perspex) kit

MxPro 4 - 2 Loop panels	
MX-4200	1-2 Loop fire panel (no loop cards)
MX-4200/D	1-2 Loop fire panel in deep enclosure suitable for up to 2 x 38Ah batteries
MX-4200/R	1-2 Loop fire panel with 19" mounting bezel (no loop cards)
MX-4200/LE	1-2 Loop fire panel in large enclosure (950 mm high)
MX-4201	1-2 Loop fire panel c/w 1 loop card
MX-4202	1-2 Loop fire panel c/w 2 loop cards
MX-4201/D	1-2 Loop fire panel c/w 1 loop card in deep enc.
MX-4202/D	1-2 Loop fire panel c/w 2 loop cards in deep enc.

Product Code	Description
MxPro 4 - 4 Loop panels	
MX-4400	1-4 Loop fire panel (no loop cards)
MX-4400/D	1-4 Loop fire panel in deep back box for up to 2 x 38Ah batteries
MX-4400/R	1-4 Loop fire panel with 19" mounting bezel (no loop cards)
MX-4400/LE	1-4 Loop fire panel in large enclosure (950 mm high)
MX-4401	1-4 Loop fire panel c/w 1 loop card
MX-4402	1-4 Loop fire panel c/w 2 loop cards
MX-4403	1-4 Loop fire panel c/w 3 loop cards
MX-4404	1-4 Loop fire panel c/w 4 loop cards
MX-4401/D	1-4 Loop fire panel c/w 1 loop card in deep enc.
MX-4402/D	1-4 Loop fire panel c/w 2 loop cards in deep enc.
MX-4403/D	1-4 Loop fire panel c/w 3 loop cards in deep enc.
MX-4404/D	1-4 Loop fire panel c/w 4 loop cards in deep enc.

MxPro 4 - 8 Loop panels	
MX-4800	2-8 Loop fire panel with standard network card (no loop cards)
MX-4802	2-8 Loop fire panel c/w standard network card & 2 loop cards
MX-4803	2-8 Loop fire panel c/w standard network card & 3 loop cards
MX-4804	2-8 Loop fire panel c/w standard network card & 4 loop cards
MX-4805	2-8 Loop fire panel c/w standard network card & 5 loop cards
MX-4806	2-8 Loop fire panel c/w standard network card & 6 loop cards
MX-4807	2-8 Loop fire panel c/w standard network card & 7 loop cards
MX-4808	2-8 Loop fire panel c/w standard network card & 8 loop cards
MX-4800/FT	2-8 Loop fire panel with fault-tolerant network card (no loop cards)
MX-4802/FT	2-8 Loop fire panel c/w fault-tolerant network card & 2 loop cards
MX-4803/FT	2-8 Loop fire panel c/w fault-tolerant network card & 3 loop cards
MX-4804/FT	2-8 Loop fire panel c/w fault-tolerant network card & 4 loop cards
MX-4805/FT	2-8 Loop fire panel c/w fault-tolerant network card & 5 loop cards
MX-4806/FT	2-8 Loop fire panel c/w fault-tolerant network card & 6 loop cards
MX-4807/FT	2-8 Loop fire panel c/w fault-tolerant network card & 7 loop cards
MX-4808/FT	2-8 Loop fire panel c/w fault-tolerant network card & 8 loop cards

MxPro 4 Series Fire Control Panels (AV or Nittan Evolution Protocol)

For Nittan Evolution protocol, replace V with N

MxPro 4 - 2 Loop V and N Series panels	
MX-4201V	1-2 Loop fire panel c/w 1 loop card
MX-4202V	1-2 Loop fire panel c/w 2 loop cards
MX-4201V/D	1-2 Loop fire panel c/w 1 loop card in deep enc.
MX-4202V/D	1-2 Loop fire panel c/w 2 loop cards in deep enc.
MX-4201V/R	1-2 Loop fire panel c/w 1 loop card with 19" mounting bezel
MX-4202V/R	1-2 Loop fire panel c/w 2 loop cards with 19" mounting bezel
MX-4201V/LE	1-2 Loop fire panel c/w 1 loop card in large enc.
MX-4202V/LE	1-2 Loop fire panel c/w 2 loop cards in large enc.

MxPro 4 - 4 Loop V and N Series panels	
MX-4401V	1-4 Loop fire panel c/w 1 loop card
MX-4402V	1-4 Loop fire panel c/w 2 loop cards
MX-4403V	1-4 Loop fire panel c/w 3 loop cards
MX-4404V	1-4 Loop fire panel c/w 4 loop cards
MX-4401V/D	1-4 Loop fire panel c/w 1 loop card in deep enc.
MX-4402V/D	1-4 Loop fire panel c/w 2 loop cards in deep enc.
MX-4403V/D	1-4 Loop fire panel c/w 3 loop cards in deep enc.
MX-4404V/D	1-4 Loop fire panel c/w 4 loop cards in deep enc.
MX-4401V/R	1-4 Loop fire panel c/w 1 loop card with 19" mounting bezel
MX-4402V/R	1-4 Loop fire panel c/w 2 loop cards with 19" mounting bezel
MX-4403V/R	1-4 Loop fire panel c/w 3 loop cards with 19" mounting bezel
MX-4404V/R	1-4 Loop fire panel c/w 4 loop cards with 19" mounting bezel
MX-4401V/LE	1-4 Loop fire panel c/w 1 loop card in large enc.
MX-4402V/LE	1-4 Loop fire panel c/w 2 loop cards in large enc.
MX-4403V/LE	1-4 Loop fire panel c/w 3 loop cards in large enc.
MX-4404V/LE	1-4 Loop fire panel c/w 4 loop cards in large enc.

MxPro Parts list

Product Code	Description
MxPro 4 - 8 loop V and N Series panels	
MX-4802V	2-8 Loop fire panel c/w standard network card & 2 loop cards
MX-4803V	2-8 Loop fire panel c/w standard network card & 3 loop cards
MX-4804V	2-8 Loop fire panel c/w standard network card & 4 loop cards
MX-4805V	2-8 Loop fire panel c/w standard network card & 5 loop cards
MX-4806V	2-8 Loop fire panel c/w standard network card & 6 loop cards
MX-4807V	2-8 Loop fire panel c/w standard network card & 7 loop cards
MX-4808V	2-8 Loop fire panel c/w standard network card & 8 loop cards
MX-4802V/FT	2-8 Loop fire panel c/w fault-tolerant network card & 2 loop cards
MX-4803V/FT	2-8 Loop fire panel c/w fault-tolerant network card & 3 loop cards
MX-4804V/FT	2-8 Loop fire panel c/w fault-tolerant network card & 4 loop cards
MX-4805V/FT	2-8 Loop fire panel c/w fault-tolerant network card & 5 loop cards
MX-4806V/FT	2-8 Loop fire panel c/w fault-tolerant network card & 6 loop cards
MX-4807V/FT	2-8 Loop fire panel c/w fault-tolerant network card & 7 loop cards
MX-4808V/FT	2-8 Loop fire panel c/w fault-tolerant network card & 8 loop cards

MxPro 4 Loop Drivers	
MXP-002	Loop driver for MX-4400/4200 (Apollo or Hochiki protocol)
MXP-067	Loop driver for MX-4400/4200 (Nittan Evolution protocol)
MXP-069	Loop driver for MX-4400/4200 (AV protocol)

MxPro 4 Series Remote Terminals	
MX-4010	Remote display terminal with standard network interface, 24V DC
MX-4020	Remote control terminal with standard network interface, 24V DC
MX-4010/FT	Remote display terminal with fault-tolerant network interface, 24V DC
MX-4020/FT	Remote control terminal with fault-tolerant network interface, 24V DC

MxPro 4 Network Cards	
MXP-003(F)*	Standard network card
MXP-009(F)*	Fault tolerant network card
* Add F - fitted to a Mx-4100, Mx-4200 or Mx-4400	

MxPro 4 Zonal LED Indication	
MXP-024(F)*	20 Zone LED card for Mx-4100 - fitted
MXP-025(F)*	20 Zone LED card for Mx-4200/4400/4800 - fitted
MXP-013-050F	50 zone LED card for Mx-4200/4400/4800 - fitted
MXP-013-050	50 zone LED card for Mx-4200 /4400 with door and label (retro-fit)
MXP-013-100F	100 zone LED card for Mx-4200/4400/4800 - fitted
MXP-013-100	100 zone LED card for Mx-4200/4400 with door and label (retro-fit)
MXP-013-200F	200 zone LED card for Mx-4200/4400/4800 - fitted
MXP-013-200	200 zone LED card for Mx-4200/4400 with door and label (retro-fit)
MXP-055F	36 zone slide-in label and LED card for Mx-4200D/4400D (requires mimic interface and network card)
* Add F - for fitted	
Note; 20 zone card cannot be fitted with an onboard printer.	

Product Code	Description
MxPro 4 Series Printers	
MXP-012F	On-board printer for Mx-4200/4400/4800 - fitted
MXP-012	On-board printer for Mx-4200/4400/4800 (retro-fit)
MXP-012-BX	External boxed panel printer for Mx-4100 /4200/4400/4800
MXS-014	Spare shrink wrap battery pack for Mxp-012 printer
MXS-008	Spare paper roll for Mxp-012 printer (pack of 10)
MXP-056 (F)**	Mimic/network printer interface card
MXP-056(F)**/FT	Fault-tolerant mimic/network printer interface card
* Add F - for fitted (**to a Mx-4200D or Mx-4400D only)	
Note: onboard printer cannot be fitted with a 20 zone LED card.	

MxPro 4 Input & Output Cards	
MXP-007(F)*	2-way programmable relay output card for Mx-4100L
MXP-008(F)*	8-way programmable relay output card for Mx-4200/4400/4800
MXP-014(F)*	8-way programmable input card for Mx-4100L/4200/4400/4800
MXP-029(F)*	Shop Interface Unit (input/output card) for Mx-4100L/4200/4400/4800
* Add F - for fitted	

MxPro 4 P-Bus Expansion cards	
Note; Additional expansion cards listed under MxPro 4 / MxPro 5 Universal Peripherals	
MXP-031(F)*	Peripheral Bus interface adaptor
MXP-032(F)*	Peripheral Bus - fire alarm routing interface card (monitored output card)
* Add F - for fitted to a Mx-4200, Mx-4400 or Mx-4800.	

MxPro 4 Modem & Pager Interface	
MXP-028 (F)*	Modem card (24V)
MXP-028-BX	Modem card (24V) boxed
MXP-047 (F) *	ESPA Pager interface
* Add F - for fitted to Mx-4200/4400/4800	

MxPro 4 Key Switches	
MXP-011	Access enable key switch assembly
MXP-011F	Access enable Key switch assembly - fitted
MXP-018	Access enable key switch assembly for RDT / RCT
MXP-018F	Access enable key switch assembly for RDT / RCT - fitted
MXP-015*	8-way key switch input card & cable *
(note: accepts up to 8 key switches Mxp-016 / Mxp-017 or 4 x Mxs-015)	
MXP-016	2-Position key switch assembly - trapped
MXP-016F	2-Position key switch assembly - trapped. fitted
MXP-017	2-Position key switch assembly - untrapped
MXP-017F	2-Position key switch assembly - untrapped. fitted
MXS-015	3-Position key switch assembly c/w 2 flying leads
MXS-015F	3-Position key switch assembly c/w 2 flying leads - fitted
* Add F - for fitted	

MxPro 4 Mounting Bezels	
MXM-001	Semi-flushing bezel for Mx-4100
MXM-002	Semi-flushing bezel for Mx-4200/Mx-4400
MXM-008	Semi-flushing bezel for Mx-4010/Mx-4020
MXM-032	Semi-flushing bezel for Mx-4800
MXM-037	Semi-flushing bezel for Mx-4100/L
MXM-048	Semi-flushing double bezel for 2 multi-loop panels side-by-side
MXM-054(F)*	19" rack mounting bezel (6U high) for a 50, 100 or 200 zone LED card
MXM-054-001(F)*	19" rack mounting bezel (300mm) for a 50,100, 200 zone LED card
MXM-057	Spare 19" rack mounted adaptor plate for Mx-4400 chassis
* Add F - for fitted	

Product Code	Description
MxPro 4 Lexan (Plexi glass) Door Kits	
MXM-007	Lexan door kit for Mx-4200/Mx-4400
MXM-007F*	Lexan door kit for Mx-4200/Mx-4400 - fitted
MXM-041	Lexan door kit for Mx-4800
MXM-041F*	Lexan door kit for Mx-4800 - fitted
replace* 001	c/w Printer cut-out
with 002	c/w Printer cut-out and key switch
or 003	c/w Key switch cut-out
MXM-059	Full Lexan deep over door kit for Mx-4200/Mx-4400
MXM-059F	Full Lexan deep over door kit for Mx-4200/Mx-4400 - fitted
MXM-059-001	Full Lexan deep over door kit with alternate key for Mx-4200/Mx-4400
MXM-059-001F	Full Lexan deep over door kit with alternate key for Mx-4200/Mx-4400 - fitted
* Add F - for fitted	

MxPro 4 Enclosures, blanking plates and spare doors	
MXM-018	Spare back-box for Mx-4100
MXM-018-002	Spare back-box for Mx-4100 without transformer
MXM-038	Spare back-box for Mx-4100/L
MXM-017	Spare back-box for Mx-4200/Mx-4400
MXM-020	Spare deep back-box for Mx-4200/Mx-4400
MXM-042	Spare back-box for Mx-4800
MXM-030	Spare back-box for Mx-4010/Mx-4020
MXM-058	Spare deep back-box for Mx-4010/Mx-4020
MXM-019	Utility enc. matching Mx-4200/Mx-4400
MXM-019-D	Deep utility enc. matching Mx-4200/Mx-4400/D
MXM-052	Utility enc. matching Mx4100/L
MXM-028	Termination enc. - 1-4 loop panel
MXM-029	Termination enc. - 1-8 loop panel
MXM-043	Document enc.
MXM-061	Large document enc.
MXM-046	Spare Mx-4100/L enc. and door
MXM-040	Spare enc. c/w door for Mx-4200/Mx-4400
MXM-044	Spare enc. for modem or BMS interface
MXM-049	Spare lid for Mx-4100
MXM-039	Spare door for Mx-4100/L
MXM-047	Spare door for Mx-4200/Mx-4400
MXM-047-001	Spare door (double aperture) for Mx-4200/Mx-4400
MXM-031	Blanking plate for lower aperture on Mx-4200/Mx-4400 door
MXM-053	Spare blank deep panel door c/w lock for Mx-4400
MXM-053F	Blank deep panel door for Mx-4200/4400 - fitted
MXM-045	Spare lid for Mx-4010/4020
MXM-050	Spare door for Mx-4800
MXM-051	Spare upper aperture blanking plate for Mx-4800 enc.
MXM-060	Spare Mx-4800 enc. assembled

Product Code	Description
MxPro 4 Special Finishes	
MXM-009 (F)*	Stainless steel door for Mx-4400/Mx-4200
MXM-009-001 (F)*	Stainless steel door (double aperture) for Mx-4400/Mx-4200
MXM-010	Stainless Steel bezel for Mx-4400/Mx-4200
MXM-011 (F)*	Chrome door for Mx-4200 / Mx-4400
MXM-011-001 (F)*	Chrome door (double aperture) for Mx-4200/Mx-4400
MXM-012	Chrome bezel for Mx-4200/Mx-4400
MXM-013 (F)*	Chrome door for Mx-4100
MXM-014	Chrome bezel for Mx-4100
MXM-015 (F)*	Stainless steel door for Mx-4100
MXM-016	Stainless steel bezel for Mx-4100
MXM-021 (F)*	Chrome door for Mx-4010/Mx-4020
MXM-022	Chrome bezel for Mx-4010/Mx-4020
MXM-023 (F)*	Stainless steel door for Mx-4010/Mx-4020
MXM-024	Stainless steel bezel for Mx-4010/Mx-4020
MXM-055 (F)*	Stainless steel door for Mx-4100/L - fitted
MXM-056	Stainless steel bezel for Mx-4100/L
* Add F - for fitted	

MxPro 4 Spares	
MXS-001	Spare Mx-4100 single loop base card
MXS-002 (N) (V)*	Spare Mx-4200 1 - 2 loop base card (*Add N for Nittan Evolution or V for AV protocol)
MXS-003 (N) (V)*	Spare Mx-4400 1 - 4 loop base card (*Add N for Nittan Evolution or V for AV protocol)
MXS-004	Spare Mx-4000 graphic display card
MXS-005	Spare power supply unit for Mx-4400
MXS-006	Spare power supply unit for Mx-4200
MXS-008	Spare paper roll for Mxp-012 printer (pack of 10)
MXS-009-050	Spare 50 zone LED card
MXS-009-100	Spare 100 zone LED card
MXS-010	BMS/graphics network interface card
MXS-011	Spare panel door key
MXS-012	Spare access enable key
MXS-013	Spare panel lock and key
MXS-019	8-way input/output card (Hochiki protocol)
MXS-021	4-way sounder splitter card
MXS-024	20 Zone LED Card (PCB only)
MXS-025	5A Sounder booster card
MXS-027	Local 100 zone mimic driver card
MXS-028	Spare peripheral fault tolerant network interface
MXS-029	Spare 10-way earthing block for Mx-4200/Mx-4400/Mx-4800
MXS-034	2-way pluggable lead for key switch input card
MXS-030	Non-illuminated push button + 450mm long 2-way cable
MXS-030-R	Illuminated (red) push button + 450mm long 2-way cable
MXS-030-G	Illuminated (green) push button + 450mm long 2-way cable
MXS-038-xxx	20-way ribbon cable (xxx = 320, 550, 650mm)
MXS-039-xxx	Cable, 2-way plug to plug (xxx = 320, 550, 650mm)
MXS-049	Spare 24V 1.5A EN54-4 PSU and battery charger card
MXS-050	Spare 24V 3A EN54-4 PSU and battery charger card
MXS-051	Spare 24V 5A EN54-4 PSU and battery charger card
MXS-055	Spare key for Mxm-059-001 Lexan door kit (alternate key)
MXS-056	Spare lock and key for Mxm-059-001 Lexan door kit (alternate key)
MXS-057	Spares kit for Mx-4200/Mx-4400
MXS-058	Spare transformer assembly for Mx-4100

