

Connectix Cabling Systems™

Cat6a FTP Compact Keystone Module

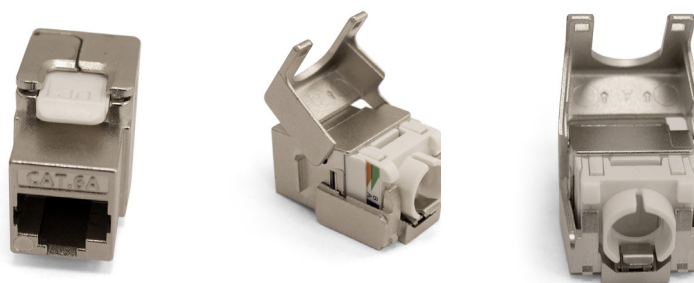
Connectix Compact Keystone Modules have been designed to provide the exceptional performance required to support extremely high speed applications, including 10-Gigabit Ethernet.

When used with Connectix Cat6a Cable, the Category 6A Keystone Modules provide an outstanding transmission medium free from the problems of alien crosstalk.

The tool-less and snap-to-fit module ensures a quick and easy to terminate installation, and the standard Keystone fitting allows the use of the same module in patch panels, wall outlets and a variety of other applications.

Features & Benefits

- Quick and easy to install
- Snap-fit to terminate
- Suitable for all standard Keystone applications
- Compact design
- Category 6a hardware performance
- T568A and T568B colour coded wiring terminals
- 25 Year System Warranty Available



Electrical Performance	
Width	16.3 mm
Depth	29mm
Height	21 mm
Mounting Hole Size	19.3 mm x 14.7 mm
Recommended Back Box Depth	32mm
Copper conductor diameter	22-24 AWG
Life (operations)	Min. 750
Shielding housing	Zinc die-cast
Colour code	T568B
Material	Polycarbonate/ABS thermoplastic resin with grade UL94 VO at 1.5 mm flame retardancy
IDC Labels	Colour coded to T568A and T568B
IDC Blocks	Tool-less IDC mechanism
Conforms to	ISO/IEC 11801;EN 50173-1, ANSI/TIA 568-C Category 6A, IEEE802.3an 10-Gigabit Ethernet

Ordering Information	
Product Description	Part Number
Cat 6a Compact Tool-less Keystone Module	008-010-010-10
RJ45 UTP Keystone Coupler	008-010-010-67
Angled Shuttered Euro Fascia	008-010-010-18
Angled Shuttered Euro Fascia - Black	008-010-010-19
Angled Shuttered LJ6C Adaptor	008-010-010-76