



Premier External TD

Outdoor Security Motion Sensor

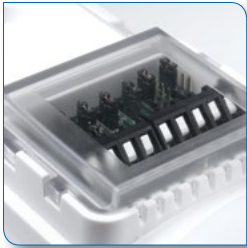
The Premier External TD is a purpose built outdoor sensor for security applications. Utilising two non-overlapping PIR sensors with superior mirrored optics, the Premier External TD is designed to perform in harsh outdoor environments.



Designed & made in
the UK by Texecom

Sales: 01706 220460
Visit: www.texecom.com





Quick and simple to install, the Premier External TD provides the following outstanding features:

- Superior mirror optics
- 12m volumetric range, adjustable to 8, 5 & 2 metres
- No disassembly required for installation
- 90° viewing angle - rotatable through 180°
- Environmentally sealed IP65 enclosure
- Digital temperature compensation for hot climates
- Auxiliary input for wiring multiple detectors
- High white light immunity
- Day/night mode

Specifications

Mounting Height:	1.0 - 1.4m, 1.2m nominal
Supply Voltage:	9-16 Vdc
Current Consumption:	28mA
Detection Method:	Dual, non-overlapping, digital PIR
Alarm Output:	NC/NO selectable relay. Rated 50Vdc, 100mA, 18Ω
Tamper Detection:	Wall and case. Sealed non-mechanical switch.
Tamper Output:	NC relay. Rated 50Vdc, 100mA, 18Ω
Operating Temperature:	-35°C (-31°F) to +55°C (+131°C)
Dimensions:	250mm x 86.5mm x 87mm
Packed Weight:	550g (20 oz) approx

European Standards

Safety: Conforms to European Union (EU) Low Voltage Directive (LVD) 73/23/EEC (amended by 93/68/EEC).

EMC: Conforms to European Union (EU) Electro-Magnetic Compatibility (EMC) Directive 89/336/EEC (amended by 92/31/EEC and 93/68/EEC).

Approved to BS EN 55022 Class B and BS EN 50130-4 : 1996.

The CE mark indicates that this product complies with the European requirements for safety, health, environmental and customer protection.

Texecom products are protected by UK and International patents, trademarks and registered design rights.

Community Registration Number 896782-0001.



Certificate Number: FM 35285

british security industry association