

# PVC-U TRUNKING

A range of cost-effective  
PVC-U cable containment for  
general wiring installations.



PVC-U TRUNKING

# PVC-U TRUNKING

Our PVC-U cable containment systems are easy to install, light to handle and cost-effective to use. We have a wide range of PVC-U trunking solutions in different heights, designs, cable capacities for the distribution of power and data; making it an excellent choice of material for the majority of commercial, education and healthcare environments. PVC-U is a self-extinguishing material and therefore helps to stop the spread of fire.

We are very proud that our PVC-U products have been manufactured using 80%\* recycled material during the last year. This equates to the equivalent of 300 double decker buses worth of PVC-U that we have prevented going to landfill!



All we are changing is the environment, using recycled PVC-U reduces greenhouse gases by 20 times when compared to virgin PVC-U. Reassuringly, we have been using recycled material for over 20 years, we take our effect on the environment very seriously and are doing our best to minimise our impact on it.

(\* Figures based on our production usages from 1/1/18 to 31/12/18)

## Standard colour

The standard colour for each Marshall-Tufflex range is shown within each relevant product information section, although solid white RAL 9003 is our most popular colour option for PVC-U.

The below table identifies the relevant RAL colour reference for all our standard colour options, dependent on product range. However we would be happy to quote for any other colour requirements, please see the Special Colours section.

Standard Colours		
WH	RD	BN
WH: White RD: Red BN: Brown		

Material	Standard colour	Colour code suffix	RAL
PVC-U	Solid White	WH	9003
	Red	RD	3020
	Brown	BN	8017

**Please note:** it is dependent on the product range as to which colour is available as standard.

## Special colours

To help enhance the style of an installation, different variations of solid colour are sometimes required.

We can provide special colours in either a solid PVC-U solution or a painted solution dependent on your client's preference. All special colour requirements will need to be specified as a RAL colour.

**Please note:** due to different processes and materials utilised, it may not always be possible to obtain an exact colour match between the extruded and moulded product.

**Please note:** these colours are made to order and therefore are subject to set up charges and a longer lead time. For more information and a quotation contact our Technical Team on +44 (0)1424 856688.



## Bio antimicrobial trunking



Where hygiene is a priority, Marshall-Tufflex has a solution with integral antimicrobial properties that can be incorporated within the PVC-U perimeter trunking and deliver ongoing antimicrobial protection that prevents 99.9% of harmful bacteria.

Because the Marshall-Tufflex Bio trunking solution is integral to the PVC-U material, there is no reduction in effectiveness of the trunking throughout its life – even if it is scratched or damaged.

Bench Trunking is available in Bio but not available as standard and is made to order and therefore subject to set up charges and a longer lead time. For more information and a quotation contact our Technical Team on +44 (0)1424 856688.

**Mini trunking**

**10 x 8mm to 38 x 38mm**

Range of small size containment for general wiring. Standard and self-fix options are available with 1 or 2 compartments. Punched profiles for single compartment and self-fixing trunking now available.

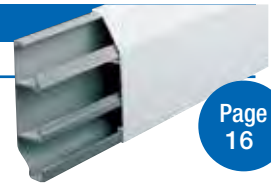


Page 4

**Sovereign Plus**

**75 x 20mm**

Skirting trunking with one piece cover.



Page 16

**Maxi trunking**

**50 x 50mm to 150 x 150mm**

A mid-size containment that can be subdivided for general wiring. Larger sizes can accommodate wiring accessories.



Page 10

**Sceptre trunking**

**100 x 40mm**

Smallest trunking system that can still accept a full range of standard wiring accessories. Suitable for unobtrusive, multiple outlet, surface installations.



Page 17

**Cornice trunking**

**50 x 50mm**

A cornice containment system for distributing services around ceiling perimeters. This system can be used with Mini Trunking to supply switch drops and pendant lighting.



Page 15

**Bench trunking**

**105 x 105mm**

Robust angular containment for distributing services on the desktop or workbench. Can accept standard wiring accessories.



Page 19

**Environmental & sustainability**



- We use recycled PVC-U in our manufacturing process, reducing carbon emissions in doing so.
- Research has shown that the use of recycled PVC offers a 20-fold reduction in greenhouse gas (GHG) emissions compared to virgin product. 100% recyclable material and has a long life cycle. We encourage our products to be recycled at the end of their useful life.
- PVC-U is a cost-effective, sustainable choice and comparable with other materials such as steel, aluminium, copper and wood.
- Virgin grade PVC-U has the lowest oil content of a commodity plastic.
- No increase in dioxin emission from Municipal Waste Incineration. No phthalates used in manufacture of PVC-U or FR-ABS.
- Lead-free formulations are used for mouldings and extrusions.
- No use of cadmium-based stabilisers or pigments.

**EMI protection**



- Some PVC-U systems are available with a coating that provides effective screening against electromagnetic interference with no reduction in cable capacity.

**Fire performance**



- The fire rating for PVC-U is excellent\* and PVC-U has all the characteristics required for Fire Escape Time.
- Highly resistant to ignition.
- Does little to contribute to the spread of fire and is classified to Building Regs: Class 0.
- Chars and is self-extinguishing.
- Has a low rate of smoke production during the early stages of a fire.
- Acts as an effective barrier to flame spread from malfunctioning electrical components within systems.
- Does not produce flaming droplets or burning debris.

\*see the independent report at [www.beama.org.uk](http://www.beama.org.uk)

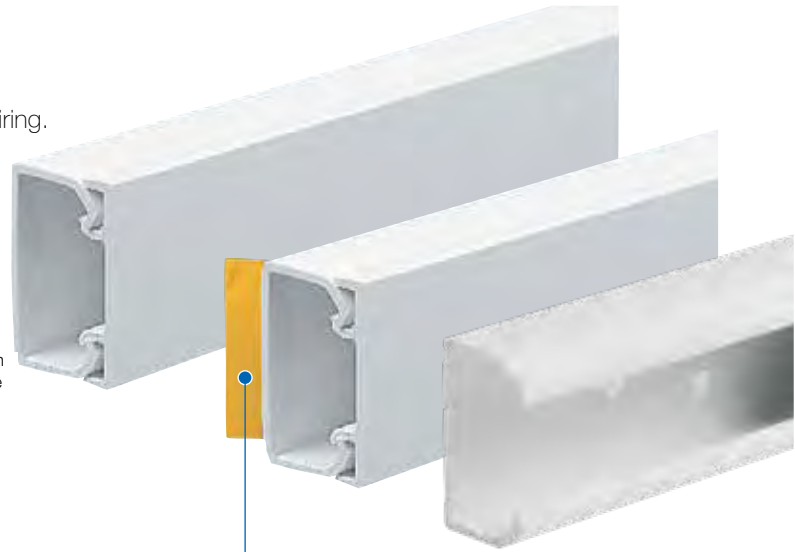
Note: you may use the rule on the left of this page to check profile sizes.

# MINI TRUNKING

Mini trunking is an economical feeder trunking system with easy accessibility for wiring and re-wiring.

### Product information

- A variety of sizes from 10 x 8mm to 38 x 38mm
- Self-fixing systems and punched systems available
- Punched holes compatible with Firefly fire safety clips\*
- Self extinguishing and non-flame propagating PVC-U



With or without self-fixing tape

See page 6 for quick reference chart

Standard Colours		
WH	RD	BN
WH: White RD: Red BN: Brown		

**Colour options:** Red and Brown solid colour options are available as standard items for selected products. Please indicate when ordering by replacing the WH colour code suffix with either RD for red or BN for brown.

**REASSURINGLY RECYCLED** OUR WHITE MINI TRUNKING LENGTHS ARE MANUFACTURED USING OVER 95% RECYCLED MATERIAL.

PVC-U TRUNKING

## Standard profiles



code	size	pack
<b>MMT1WH</b>	16 x 16mm	30 x 3m



code	size	pack
<b>MMT2WH</b>	25 x 16mm	30 x 3m
Brown is available as standard colour		



code	size	pack
<b>MMT3WH</b>	38 x 16mm	15 x 3m
Red is available as standard colour		



code	size	pack
<b>MMT4WH</b>	38 x 25mm	15 x 3m
Brown is available as standard colour		



code	size	pack
<b>MMT5WH</b>	50 x 25mm	12 x 3m



code	size	pack
<b>MMT6WH</b>	38 x 38mm	6 x 3m

p20 Technical Information

Self fixing profiles



**MMT00SF**

code	size	pack
<b>MMT00SFWH</b>	10 x 8mm	40 x 3m

Brown is available as standard colour



**MMT0SF**

code	size	pack
<b>MMT0SFWH</b>	16 x 10mm	40 x 3m



**MMT1SF**

code	size	pack
<b>MMT1SFWH</b>	16 x 16mm	30 x 3m



**MMT2SF**

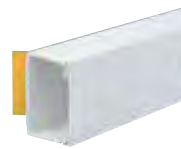
code	size	pack
<b>MMT2SFWH</b>	25 x 16mm	30 x 3m

Red and brown are available as standard colours



**MMT3SF**

code	size	pack
<b>MMT3SFWH</b>	38 x 16mm	15 x 3m



**MMT4SF**

code	size	pack
<b>MMT4SFWH</b>	38 x 25mm	15 x 3m

Punched profiles



**Punched profiles MMTH2**

code	size	pack
<b>MMTH2WH</b>	25 x 16mm	30 x 3m

Red is available as a standard colour



**Punched profiles MMTH2SF self fix**

code	size	pack
<b>MMTH2SFWH</b>	25x16mm	30x3m



**Punched profiles MMTH4**

code	size	pack
<b>MMTH4WH</b>	38 x 25mm	15 x 3m



**Punched profiles MMTH4SF self fix**

code	size	pack
<b>MMTH4SFWH</b>	38x25mm	15x3m

Components



**Ceiling rose adaptor**

code	size	pack
<b>TCR2WH</b>	2 K.O. for MMT1	10
	2 K.O. for MMT2	

Designed to accept all popular makes of ceiling rose. Supplied with fixing screws. Fixing centres 50.8mm. Internal depth 12mm. External diameter 81mm



**Surface box adaptors MMT0/1/2/3**

code	size	pack
<b>TA1WH</b>	MMT1	50
<b>TA2WH</b>	MMT2	50
<b>TA3WH</b>	MMT3	20

TA0 fits MMT1-KO



**Tapered adaptors MMT1 & 2 to fit TA3 aperture**

code	size	pack
<b>TA3/1CWH</b>	MMT1	20
<b>TA3/2LHWH</b>	MMT2	20
<b>TA3/2RHWH</b>	MMT2	20
<b>TA3/2CWH</b>	MMT2	20



**Conduit to mini adaptor**

code	size	pack
<b>TAC1/2WH</b>	MMT1/20mm round	20

Accessories



**PVC pipe cutter**

code	pack
<b>MTPC42</b>	1

**Please note**

There are no fittings for MMT00SF and MMT0SFWH.

**Coupler**

External coupler

**End cap**

End cap

**Internal bend**

Square internal bend

**External bend**

Square external bend



**MMT1WH, MMT1SFWH**

16 x 16mm



TC1WH  
Pack 40

TEC1WH  
Pack 100

TIB1WH  
Pack 50

TEB1WH  
Pack 50

**MMT2WH, MMT2SFWH, MMTH2WH, MMTH2SFWH**

25 x 16mm



TC2WH\*  
Pack 40

TEC2WH\*  
Pack 100

TIB2WH\*  
Pack 30

TEB2WH\*  
Pack 30

**MMT3WH, MMT3SFWH**

38 x 16mm



TC3WH\*\*\*  
Pack 25

TEC3WH\*\*\*  
Pack 50

TIB3WH\*\*\*  
Pack 25

TEB3WH\*\*\*  
Pack 25

**MMT4WH, MMT4SFWH, MMTH4WH, MMTH4SFWH**

38 x 25mm



TC4WH\*\*  
Pack 25

TEC4WH\*\*  
Pack 30

TIB4WH\*\*  
Pack 25

TEB4WH\*\*  
Pack 25

**MMT5WH**

50 x 25mm



TC5WH  
Pack 20

TEC5WH  
Pack 20

TIB5WH  
Pack 20

TEB5WH  
Pack 20

**MMT6WH**

38 x 38mm



TC6WH  
Pack 10

TEC6WH  
Pack 20

TIB6WH  
Pack 10

TEB6WH  
Pack 10

**Flat angles**

Square angle

**Tees**

Square equal tee

Square unequal tee

Ceiling tee

Angle tee



**MMT1WH, MMT1SFWH**

16 x 16mm



TFB1WH  
Pack 60

TT1-1WH  
Pack 20

-

TCT1/1WH  
Pack 10

-

**MMT2WH, MMT2SFWH, MMTH2WH, MMTH2SFWH**

25 x 16mm



TFB2WH\*  
Pack 30

TT2-2WH\*  
Pack 30

TT2-1WH  
Pack 30

TCT2/1WH  
TCT2/2WH  
Pack 10

TAT2LHWH  
TAT2RHWH  
Pack 10

**MMT3WH, MMT3SFWH**

38 x 16mm



TFB3WH\*\*\*  
Pack 25

TT3-3WH\*\*\*  
Pack 25

TT3-1WH  
TT3-2WH  
Pack 20

-

-

**MMT4WH, MMT4SFWH, MMTH4WH, MMTH4SFWH**

38 x 25mm



TFB4WH\*\*  
Pack 20

TT4-4WH\*\*  
Pack 20

TT4-1WH  
TT4-2WH  
TT4-3WH  
Pack 20

TCT4/2WH  
Pack 10

-

**MMT5WH**

50 x 25mm



TFB5WH  
Pack 20

TT5-5WH  
Pack 20

-

-

-

**MMT6WH**

38 x 38mm



TFB6WH  
Pack 10

TT6-6WH  
Pack 10

-

-


-

\* Red and brown are available as standard colours

\*\* Brown is available as a standard colour


\*\*\* Red is available as a standard colour

## 1 gang accessory boxes - Square


Depth	Mini trunking sizes	Knockout entries	Code	Pack	
19mm	MMT1/2	LH, RH, Centre	MSSB28WH	20	
19mm	MMT3	LH, RH, Centre	MSSB110WH	20	
32mm	MMT1/2	LH, RH, Centre	MSSB35WH	20	
32mm	MMT3	LH, RH, Centre	MSSB116WH*	20	
44mm	MMT2/3	Centre entry for both MMT2 and MMT3. RH and LH side entry for MMT2	MSSB18WH	10	
44mm	MMT3	LH, RH, Centre	MSSB120WH	10	

\* MSSB116 is also available in red


## 1 gang accessory boxes - Radius

Depth	Mini trunking sizes	Knockout entries	Code	Pack	
19mm	MMT1/2	LH, RH, Centre	MSSB27WH	20	
19mm	MMT3	LH, RH, Centre	MSSB112WH	20	
32mm	MMT1/2	LH, RH, Centre	MSSB20WH	20	
32mm	MMT3	LH, RH, Centre	MSSB118WH	20	
44mm	MMT2/3	For MMT2 = 1 top entry centre For MMT3 = 1 bottom entry centre	MSSB42WH	10	
44mm	MMT3	LH, RH, Centre	MSSB122WH	10	


## 1 gang shrouded entry boxes – Square

Depth	Mini trunking sizes	Knockout entries	Code	Pack	
32mm	MMT2	With integral moulded MMT2 adaptor	MSSB15WH	20	

## Cover plates

Depth	Mini trunking sizes	Description	Code	Pack	
2mm	N/A	Flat	MSCP2WH	20	
9mm	N/A	Raised	MSSP10WH	10	

## Earth terminal

Size	Mini trunking sizes	Description	Code	Pack	
–	–	Brass earthing terminal – 15Amp rating	MET1	100	

p20

Technical  
Information

## 2 gang boxes – Square

Depth	Mini trunking sizes	Knockout entries	Code	Pack
32mm	MMT2	LH, RH, Centre	MSSB36WH	10
32mm	MMT3	LH, RH, Centre	MSSB216WH	10
44mm	MMT2	Includes RH and LH side entry for MMT2	MSSB24WH	5
44mm	MMT3	LH, RH, Centre	MSSB220WH	5



## 2 gang boxes – Radius

Depth	Mini trunking sizes	Knockout entries	Code	Pack
32mm	MMT2	LH, RH, Centre	MSSB22WH	10
32mm	MMT3	LH, RH, Centre	MSSB218WH	10
44mm	MMT2/3	Centre entry	MSSB43WH	5
44mm	MMT3	LH, RH, Centre	MSSB222WH	5



## 2 x 1 gang box – Radius

Depth	Mini trunking sizes	Knockout entries	Code	Pack
32mm	MMT2	2 x 1 gang MMT2 centre and side entry	MSSB82WH	10



## 2 gang shrouded entry boxes – Square

Depth	Mini trunking sizes	Knockout entries	Code	Pack
32mm	MMT2	With integral moulded MMT2 adaptor	MSSB16WH	20
35mm	MMT2/3	Side entries permit horizontal and vertical accessory mounting Shrouded 2-part entry boxes for use with MMT2 and 3 (25 x 16mm and 38 x 16mm)	MSSB200WH	10



## Cover plates

Depth	Mini trunking sizes	Description	Code	Pack
2mm	N/A	Flat	MSCP3WH	10
9mm	N/A	Raised	MSSP20WH	2







**OUR WHITE MINI TRUNKING LENGTHS ARE MANUFACTURED USING OVER 95% RECYCLED MATERIAL.**

