

A Series



- Halogen-free thermoplastic
- Sturdy external fastenings
- Quick mounting with snug-fitting clamshell
- Suitable for wet rooms IP55

PRE-MARKED CABLE ENTRY

The pre-marked cable entries can be opened with a knife or using the cut-out tool supplied.



1 FREE TOOL

with every

10 A Series Boxes

Classic and still youthful: The well-known junction boxes of the A Series have had a makeover. Halogen-free thermoplastic is just as much of a hallmark of the A Series as a tight-fitting clamshell and premarked cable entries. A protection rating of IP55 and practical external fastenings round off the profile of the classic item.

A Series

MATERIAL PE Polyethylene

COLOUR Light Grey



TYPE	A 6	A 8	A 8 5
PART CODE	2000001	2000016	2000024
Ext. Dimension LxWxH mm	80x43x36	75x75x36.2	75x75x36.2
Maximum Cable Entries	10	7	7
Pack Quantity	10	10	10
Accessories	Without Terminal Strip	Without Terminal Strip	With Terminal Strip



TYPE	A 11	A 11 5	A 14
PART CODE	2000342	2000326	2000378
Ext. Dimension LxWxH mm	85x85x40	85x85x40	100x100x40
Maximum Cable Entries	12	12	16
Pack Quantity	10	10	10
Accessories	Without Terminal Strip	With Terminal Strip	Without Terminal Strip



TYPE	A 14 5	A 18	A 18 5
PART CODE	2000382	2000410	2000414
Ext. Dimension LxWxH mm	100x100x40	125x100x40	125x100x40
Maximum Cable Entries	16	18	18
Pack Quantity	10	10	10
Accessories	With Terminal Strip	Without Terminal Strip	With Terminal Strip

The success of the T Series has a solid basis

CONDENSATION WATER OPENING

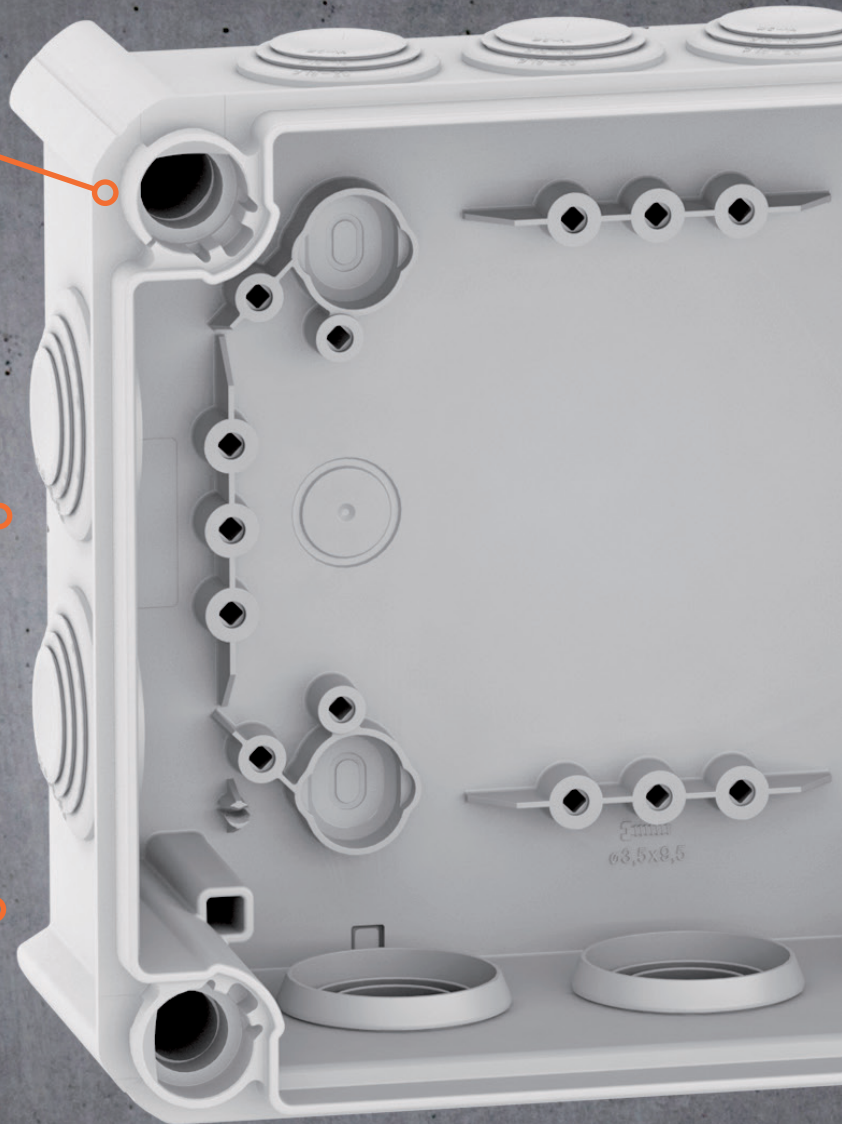
There is a condensation water opening on each side, which can be pushed in as necessary.

ALIGNMENT MARKINGS

There are markings on all sides of the junction box for alignment with a chalk line.

MOUNTING POINTS

Thanks to cleverly arrayed mounting points, versatile installation options are created for the internal space.



UV RESISTANCE

The material of all junction boxes is UV resistant and is therefore suitable for use outside.

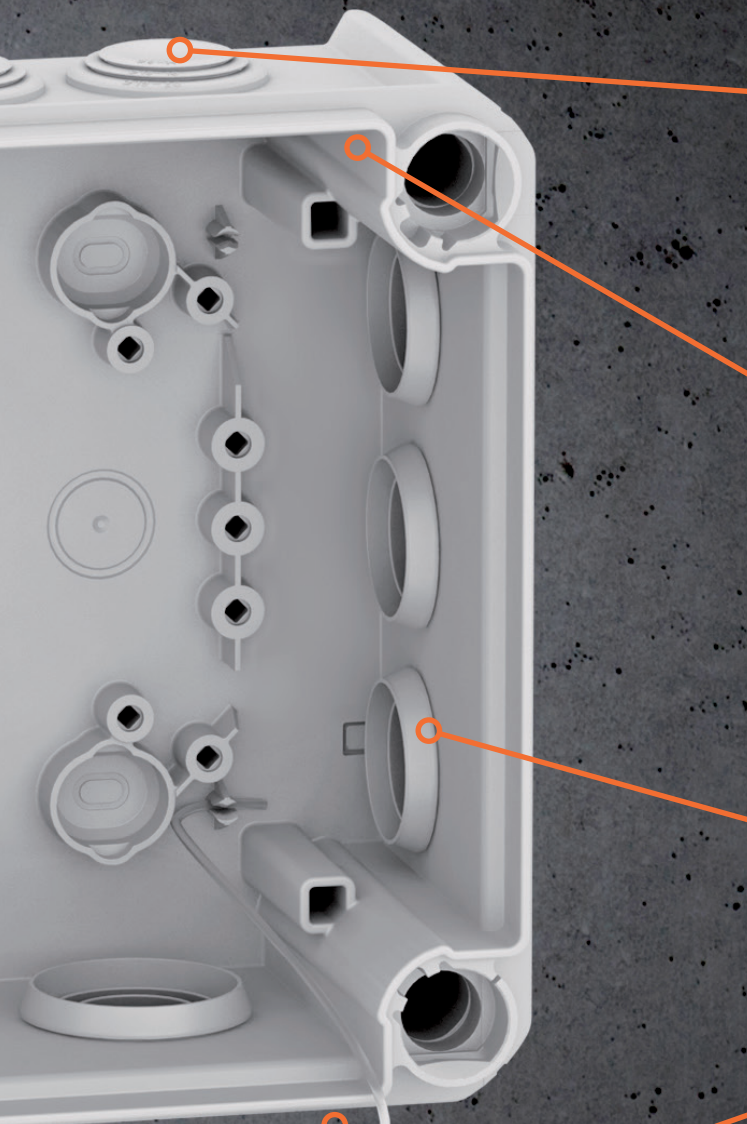
COVER CAPTIVITY

The cover captivity ensures that the lid cannot go missing or drop down – a benefit to any contractor who works on ladders!

ALWAYS INDICATE THE **PART CODE** WHEN ORDERING.

Intelligence is the natural characteristic of the T Series: Our developers have used high-quality materials, sensible wall thicknesses and a stable construction to ensure that the

T Series can stand up to even the hardest conditions. All the boxes are made of halogen-free polypropylene and do not contain fluorine, chlorine or bromine.



SCREW COVER FLAPS

When fixed through the back wall the included screw cover flaps will cover the openings.

CORNER DOME

The corner dome separates the fixing points of the junction box from the internal space and ensures a particularly torsion-resistant box. The solid impact characteristics have been tested to DIN EN 50102 and classified according to the universally accepted Impact Rating IK code.

KNOCK-OUT ENTRIES

Knock-out entries in the bottom allow the insertion of cables from below.

SCREW-ON COVERS

Screw-on covers provide fast and secure fastening of the cover. The junction box once closed, is completely sealed.



T Series Plug-In Seal

MATERIAL PP Polypropylene (T 160, T 250 & T 350 are Glass-fibre reinforced)

COLOUR Light Grey



TYPE	T 25	T 40	T 60
PART CODE	2007029	2007045	2007061
Ext. Dimension LxWxH mm	Ø80x51	90x90x52	114x114x57
Maximum Cable Entries	4 x M25	7 x M25	7 x M25
Maximum Cable CSA	2.5mm ²	4mm ²	6mm ²
Pack Quantity	5	5	5



TYPE	T 100	T 160	T 250
PART CODE	2007077	2007093	2007109
Ext. Dimension LxWxH mm	150x116x67	190x150x77	240x190x95
Maximum Cable Entries	10 x M25	7 x M25 5 x M32	9 x M25 7 x M32
Maximum Cable CSA	10mm ²	16mm ²	25mm ²
Pack Quantity	1	1	1



TYPE	T 350
PART CODE	2007125
Ext. Dimension LxWxH mm	285x201x120
Maximum Cable Entries	16 x M32 8 x M40
Maximum Cable CSA	35mm ²
Pack Quantity	1

- High impermeability of IP66. Plug-in seals made of thermoplastic elastomer (TPE). Alternatively, cable glands or pipe entries can be mounted.
- Universally deployable: UV-resistant for use outdoors, halogen-free for the use indoors.
- Maximum Cable CSA – Is the recommended maximum cross sectional area size of cable that can be connected within each size of junction box.

T Series Closed

MATERIAL PP Polypropylene (T 160 OE, T 250 OE & T 350 OE are Glass-fibre reinforced)

COLOUR Light Grey



TYPE	T 40 OE	T 60 OE	A 100 OE
PART CODE	2007223	2007239	2007255
Ext. Dimension LxWxH mm	90x90x52	114x114x57	150x116x67
Maximum Cable CSA	4mm ²	6mm ²	10mm ²
Pack Quantity	5	5	1
IP Rating	IP55	IP66	IP66



TYPE	T 160 OE	T 250 OE	T 350 OE
PART CODE	2007271	2007287	2007303
Ext. Dimension LxWxH mm	190x150x77	240x190x95	285x201x120
Maximum Cable CSA	16mm ²	25mm ²	35mm ²
Pack Quantity	1	1	1
IP Rating	IP66	IP66	IP66

- All the T Series junction boxes are UV-resistant. They are made from polypropylene (a thermo-plastic material) and have closed side walls. This means that the required openings can be made wherever they are required. EDK plug-in seals or cable glands with locknuts can be inserted into these openings, to allow cable insertion.
- The junction boxes can be mounted onto mounting plates in the openings using self-tapping screws 3.5 x 9.5.
- Max Cable CSA - Is the recommended maximum cross sectional area size of cable that can be connected within each size of junction box.



T Series with Knock-Out Entries

MATERIAL PP Polypropylene

COLOUR Light Grey



TYPE	T 40 M20	T 40 M20 KL
PART CODE	2007900	2007904
Ext. Dimension LxWxH mm	90x90x52	90x90x52
Maximum Cable Entries	7 x Ø20mm	7 x Ø20mm
Maximum Cable CSA	4mm ²	4mm ²
Pack Quantity	5	5
Accessories	Without Terminal Strip	With Terminal Strip



TYPE	T 60 M20	T 60 M25	T60 M20 KL
PART CODE	2007910	2007926	2007914
Ext. Dimension LxWxH mm	114x114x57	114x114x57	114x114x57
Maximum Cable Entries	7 x Ø20mm	7 x Ø25mm	7 x Ø20mm
Maximum Cable CSA	6mm ²	6mm ²	6mm ²
Pack Quantity	5	5	5
Accessories	Without Terminal Strip	Without Terminal Strip	With Terminal Strip

- The junction boxes are made from polypropylene (a thermoplastic material) and the plug-in seals are made from ethylene vinyl acetate (EVA). This allows installation of cables either directly through the 7xØ20mm seals, or the seals can be cut with a knife at the pre-marked points, in order to create an insertion opening for cables or pipes. Alternatively, instead of seals, cable glands can be inserted

through the openings and be locked into place internally with a locknut.

- The junction boxes can be mounted onto mounting plates in the openings using self-tap-ping screws 3.5 x 9.5.
- Maximum Cable CSA - Is the recommended maximum cross sectional area size of cable that can be connected within each size of junction box.

B Series



- **With pre-moulded threaded entries for insertion of cable glands without locknut**
- **Cable openings are easily broken open with a screwdriver**
- **Supplied with flexible cable glands**
- **Cover fastening with metal screws**

A classic amongst the OBO thermoset junction boxes is the B Series with and without a thread. The material is Aminoplast. This plastic is hard and is highly resistant, meaning that the junction boxes are very stable. The required openings can

be broken-out at the premarked points using a screwdriver. Cables can be perfectly installed with cable glands, either directly in a housing thread or in a penetration hole with a cable gland and a locknut in the inside.

B Series with Perforation Membrane



TYPE	B 9 T M 5	B 9 T M	B 9 T M NL
PART CODE	2001845	2001853	2001861
Ext. Dimension LxWxH mm	110x110x51	110x110x51	110x110x51
Maximum Cable Entries	9	9	9
Pack Quantity	5	5	5
Accessories	With Terminal Strip	Empty	3 Cable Glands

The wet-room junction box B9/T...: comprises of two halogen-free plastic components. There are additional entries in the base with push-through membranes (for cable diameter up to 15 mm) and in the back of the box.

T Series Terminal Strip



TYPE	KL-T 02-06
PART CODE	2016185
Ext. Dimension LxWxH mm	62x25x35
Poles	5
Max Cable CSA	1.5-6mm ²
Pack Quantity	10

Steel terminal block and bolts, galvanised and transparently passivated, nominal voltage 400 V, 5-pole, with terminal sockets, Max. connectable cross-sections per terminal: 3x6mm², 4x4mm² or 6x2.5mm².

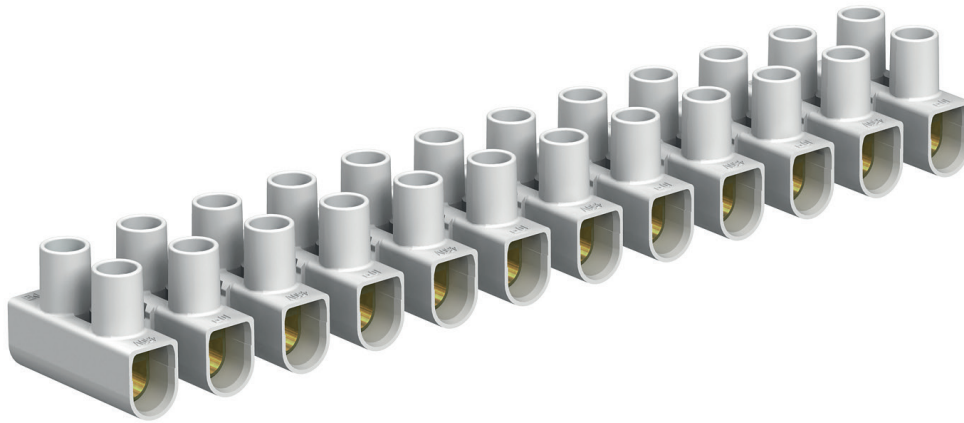
Cable Gland with Metric Thread and Locknut



The quickest and most convenient way of providing strain relief and tightness with cable glands on junction boxes and housings is with the tried-and-trusted V-TEC VM cable glands from OBO. With the integrated sealing lip and the special OBO slat technology, a protection class of IP68 is achieved. Strain relief and tightness have been tested to DIN EN 62444. The connecting threads of the cable glands are metric or PG and are therefore suitable for universal use. Once screwed in place, the installation is there permanently.

V-TEC TYPE	VM12+ LGR	VM16+ LGR	VM20+ LGR	VM25+ LGR	VM32+ LGR	VM40+ LGR	VM50+ LGR	VM63+ LGR
PART CODE	2022762	2022764	2022766	2022768	2022770	2022772	2022774	2022776
Thread	M12 x 1.5	M16 x 1.5	M20 x 1.5	M25 x 1.5	M32 x 1.5	M40 x 1.5	M50 x 1.5	M63 x 1.5
Pack Quantity	50	50	50	25	20	10	5	5

Polypropylene Connectors



TYPE	72 CE WS/EKL 0 S	74 CE WS/EKL 1 S	76 CE WS/EKL 2 S
PART CODE	2056070	2056224	2056372
Nominal cross-section mm ²	4mm ²	6mm ²	10mm ²
Nominal Voltage	450V	450V	450V
Nominal Current	32A	41A	57A
Colour	White	White	White
Pack Quantity	10	10	10
Material	PP Polypropylene		

TYPE	78 CE WS/EKL 3 S	79 CE WS/EKL 4BE	80 CE WS/EKL 5E
PART CODE	2056550	2056577	2056590
Nominal cross-section mm ²	16mm ²	25mm ²	35mm ²
Nominal Voltage	450V	750V	750V
Nominal Current	76A	101A	125A
Colour	White	White	White
Pack Quantity	10	10	10
Material	PP Polypropylene		

- Tested to EN 60998
- Steel terminals, steel screws, electrogalvanized
- 12-pole, individual terminals detachable from strips using “twist’n’pull”
- Captive upwards screw
- Max. approved ambient temperature to EN 60998: -5 to +80 °C

Other colours and materials are available within the OBO Bettermann Connectors range.



IRELAND

Unit 17b Goldenbridge Industrial Estate,
Tyrconnell Road,
Inchicore,
Dublin 8
D08 WD50

T +353 (0)1 453 7033

F +353 (0)1 453 8911

E sales@coreelectrical.ie

NORTHERN IRELAND

Unit 4 Duncrue Industrial Park,
Duncrue Road,
Belfast,
BT3 9BP

T +44 (0)28 9002 0066

F +44 (0)28 900 213 08

E info@coreelectrical.com

www.coreelectrical.com